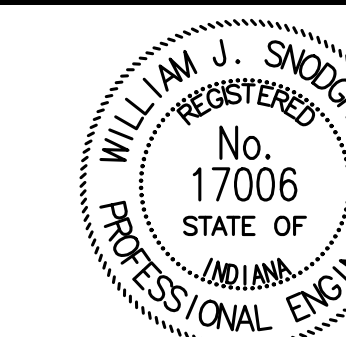




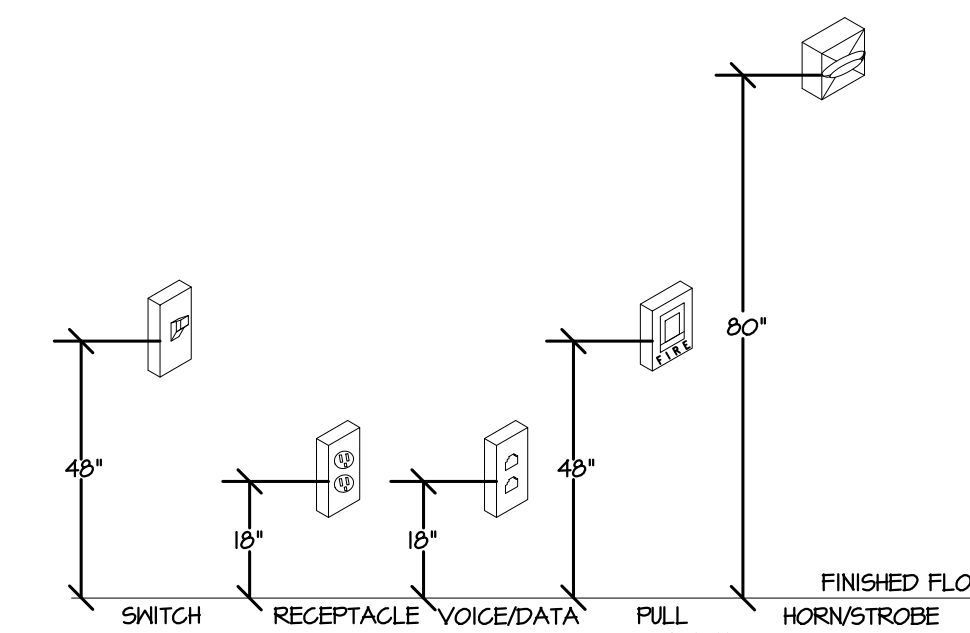
DESIGN-AIRE ENGINEERING, INC
2707 Rand Road Indianapolis, IN 46241
voice: 317-464-0900 fax: 317-464-9393
www.daeengineering.com
Mechanical, Electrical, &
Energy Engineering

JOB NO.: 18169.1
DATE: January 15, 2020
DRAWN BY: ILP
CHECKED BY: WS
REVISIONS:



William J. Snodgrass

This drawing and its contents are the property of P.A. Summers Architecture, LLC and shall not be reproduced in whole or in part by any means, mechanical or electronic, without express written permission of P.A. Summers Architecture, LLC.
Copyright 2018 by P.A. Summers Architecture, LLC.

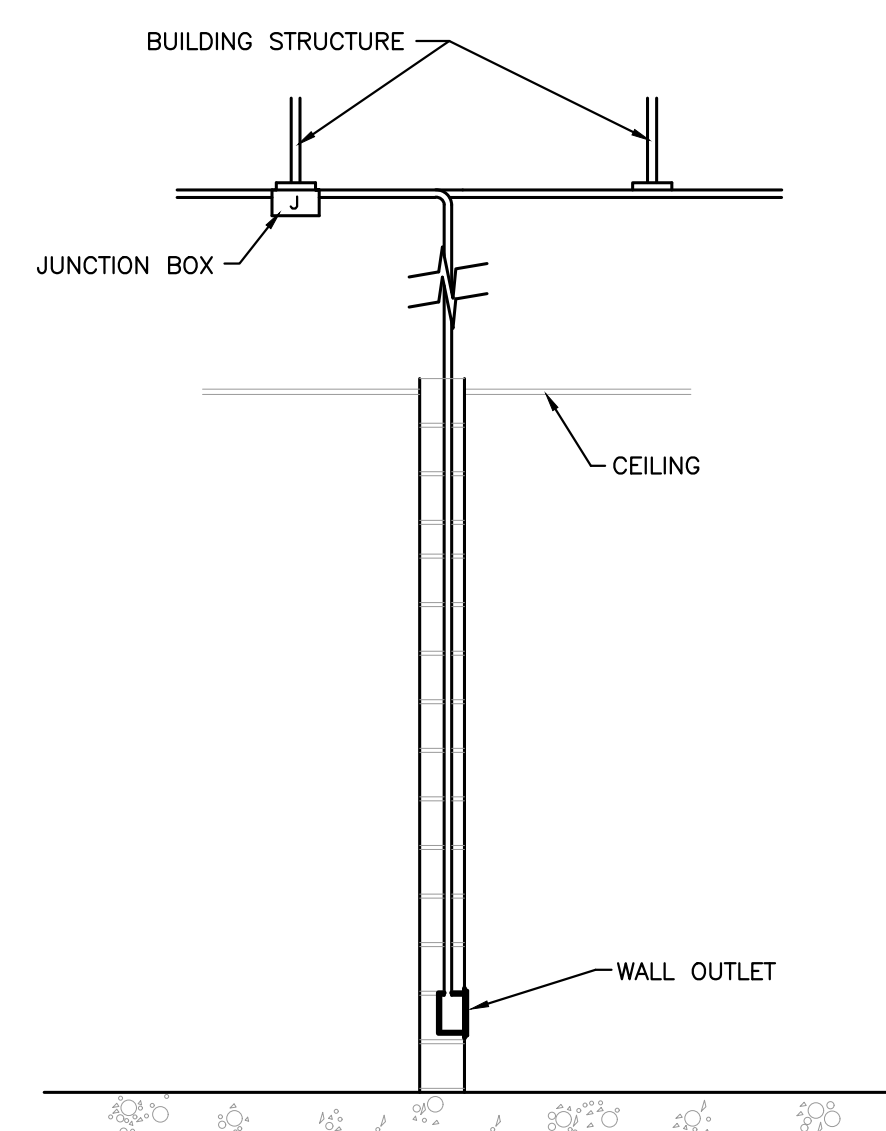


NOTE: ALL DIMENSIONS ARE TYPICAL FOR GIVEN DEVICE UNLESS OTHERWISE NOTED ON PLANS.

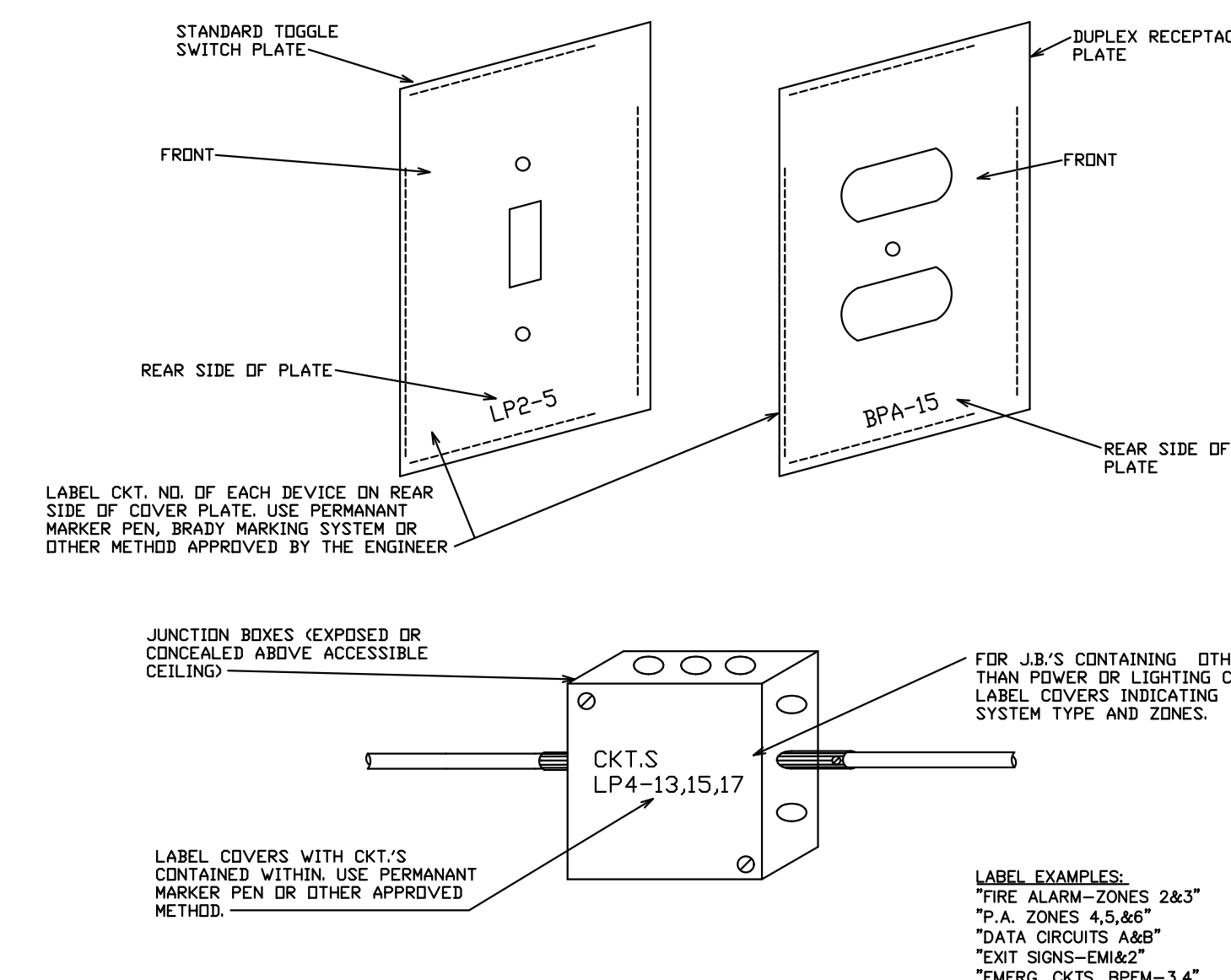
OPERABLE DEVICE MOUNTING HEIGHT DETAIL
NOT TO SCALE

CONDUIT LOCATION OR APPLICATION	CONDUIT TYPE						
	RIGID	INTERMEDIATE	E.M.T.	FLEXIBLE	FLEXIBLE W/ W.P. JACKET	P.V.C. SCHED 40	A.C. CABLE
IN CONCRETE SLAB (NOT LARGER THAN 1")		③					
BELOW LOWEST FLOOR SLAB		③				②	
CONCEALED IN WALLS, ABOVE CEILINGS AND IN FURRED SPACES		③	①				
INSIDE, ABOVE BOTTOM OF ROOF STEEL							○
FEEDER, POWER AND SIGNAL CIRCUITS RUN EXPOSED	③	③					
FINAL CONNECTION TO EQUIP. SUBJECT TO VIBRATION				○			
FINAL CONNECTION TO EQUIP. IN DAMP LOCATIONS					○		
SHORT CONNECTIONS WHERE NON-FLEXIBLE CONDUIT IS IMPRACTICAL				○			

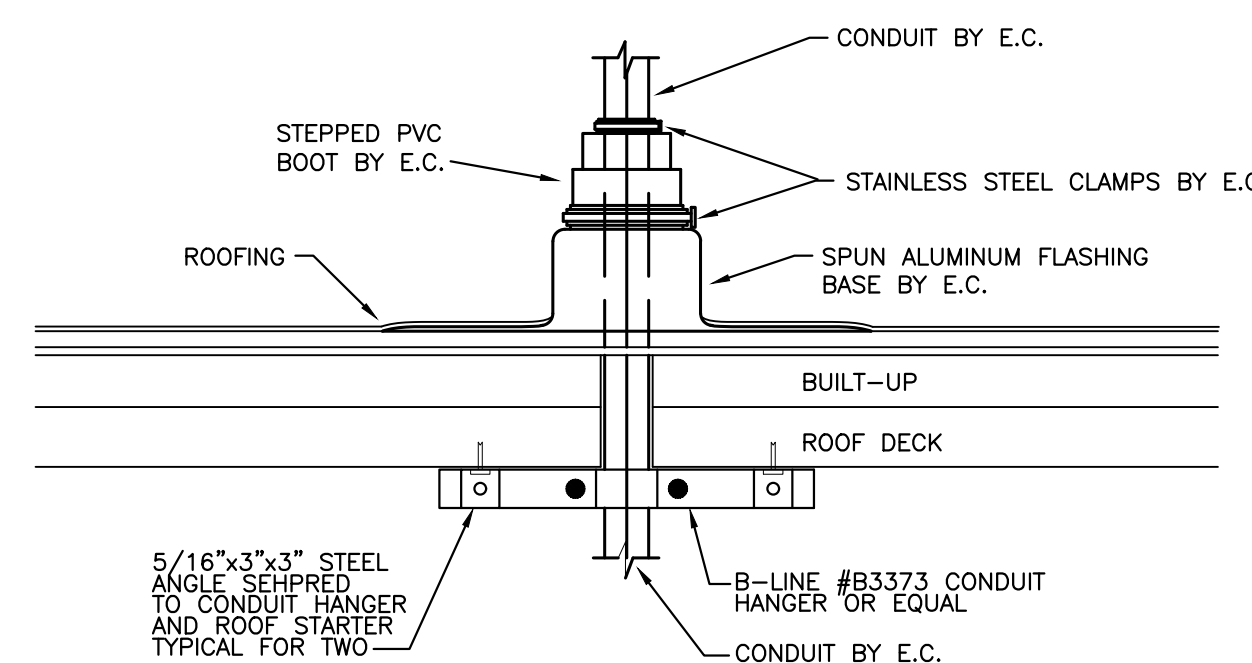
NOTE:
○ - TYPE OF CONDUIT TO BE USED.
① - E.M.T. SHALL NOT BE USED IN SIZES LARGER THAN 2 INCH.
② - CONVERT TO RIGID OR INTER. THROUGH SLAB.
③ - USE THREADED FITTINGS ONLY.



TYPICAL DETAIL FOR OVERHEAD FEED TO INTERIOR WALL OUTLET
NO SCALE



ELECTRICAL IDENTIFICATION DETAIL
NO SCALE



TYPICAL ROOF PENETRATION
NO SCALE

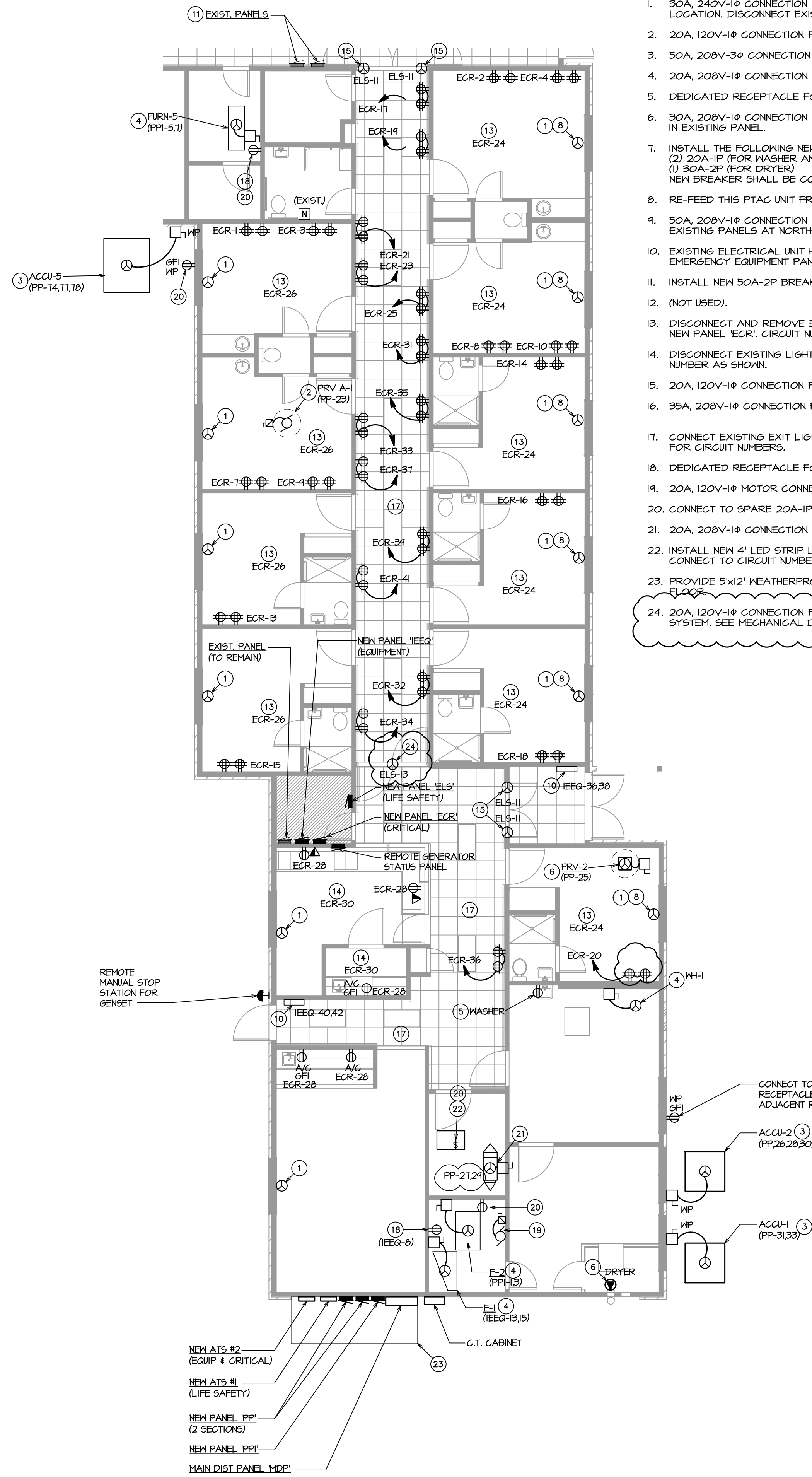
Renovations To
MAJESTIC CARE CONNERSVILLE
1029 E. 5th Street
Connerville, Indiana 47331

Prepared For:

Majestic Care Medical & Health
8935 Technology Drive
Fishers, Indiana 46038

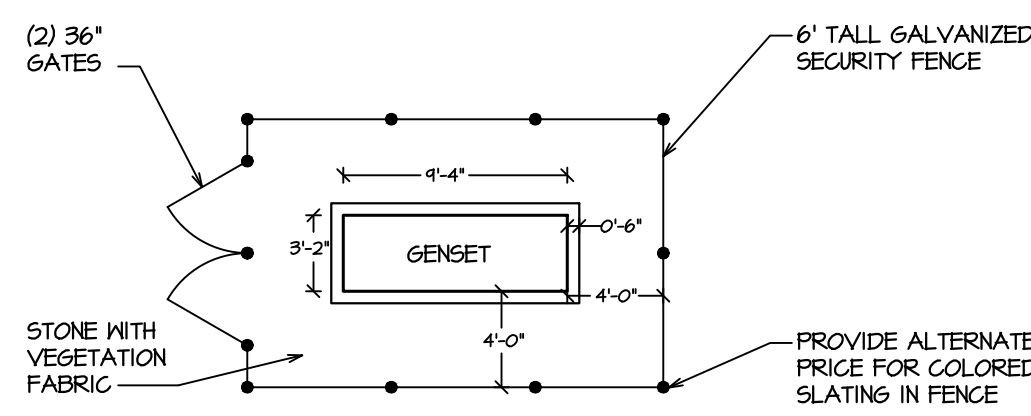
SHEET

E002
ELECTRICAL
DETAILS



PLAN NOTES:

- 30A, 240V-1Ø CONNECTION FOR NEW PTAC UNIT. E.G. SHALL CONNECT NEW PTAC TO EXISTING PTAC CIRCUIT IN SAME LOCATION. DISCONNECT EXISTING PTAC UNIT TO BE REMOVED BY OTHERS.
- 20A, 120V-1Ø CONNECTION FOR PRV.
- 50A, 208V-3Ø CONNECTION FOR ACCU. INSTALL 3-Ø, 1-Ø GND IN A 3/4"Ø.
- 20A, 208V-1Ø CONNECTION FOR GAS FURNACE.
- DEDICATED RECEPTACLE FOR WASHER. CONNECT TO NEW 20A-1P CIRCUIT BREAKER IN EXISTING PANEL.
- 30A, 208V-1Ø CONNECTION FOR DRYER. INSTALL 2-Ø, 1-Ø GND IN A 3/4"Ø. CONNECT TO NEW 30A-2P CIRCUIT BREAKER IN EXISTING PANEL.
- INSTALL THE FOLLOWING NEW CIRCUIT BREAKERS IN EXISTING PANEL:
 (1) 20A-1P (FOR WASHER AND NH-1)
 (2) 30A-2P (FOR DRYER)
 NEW BREAKER SHALL BE COMPATIBLE WITH 'CUTLER-HAMMER' TYPE CG PANEL BOARD.
- RE-FEED THIS PTAC UNIT FROM EXISTING PANELS ON NORTH END OF BUILDING.
- 50A, 208V-1Ø CONNECTION FOR NEW PTAC UNIT. INSTALL 2-Ø, 1-Ø GND IN A 3/4"Ø. CONNECT TO NEW 50A-2P C.B. IN EXISTING PANELS AT NORTH END OF BUILDING.
- EXISTING ELECTRICAL UNIT HEATER TO REMAIN. CONTRACTOR SHALL DISCONNECT EXISTING UNIT AND RECONNECT TO EMERGENCY EQUIPMENT PANEL 'IEEQ'. 30A, 208V-1Ø.
- INSTALL NEW 50A-2P BREAKERS AS NECESSARY FOR NEW FEEDS TO NEW PTAC UNITS.
- (NOT USED).
- DISCONNECT AND REMOVE EXISTING OVER BED TASK LIGHTING FROM EXISTING CIRCUIT AND RECONNECT NEW FIXTURE TO NEW PANEL 'EGR'. CIRCUIT NUMBER AS SHOWN.
- DISCONNECT EXISTING LIGHTING IN THIS AREA FROM EXISTING CIRCUIT AND RECONNECT TO NEW PANEL 'EGR'. CIRCUIT NUMBER AS SHOWN.
- 20A, 120V-1Ø CONNECTION FOR MOTORIZED DOOR.
- 35A, 208V-1Ø CONNECTION FOR ACCU. INSTALL 2-Ø, 1-Ø GND IN A 3/4"Ø.
- CONNECT EXISTING EXIT LIGHTS AND EMERGENCY LIGHTS TO EMERGENCY LIFE SAFETY PANEL 'ELS'. SEE PANEL SCHEDULE FOR CIRCUIT NUMBERS.
- DEDICATED RECEPTACLE FOR TEMPERATURE CONTROL PANEL.
- 20A, 120V-1Ø MOTOR CONNECTION FOR CONDENSATE PUMP. CONNECT TO SPARE 20A-1P C.B. IN EXISTING PANEL.
- CONNECT TO SPARE 20A-1P C.B. IN EXISTING PANEL.
- 20A, 208V-1Ø CONNECTION FOR DUCT FURNACE.
- INSTALL NEW 4' LED STRIP LIGHT AND RECEPTACLE IN ATTIC. MOUNT NEW LIGHT SWITCH IN ATTIC NEAR NEW CEILING HATCH. CONNECT TO CIRCUIT NUMBER SHOWN. STRIP LIGHT SHALL BE SIMILAR TO 'LITHONIA' #ZLN SERIES.
- PROVIDE 5'x12' WEATHERPROOF ENCLOSURE. ENCLOSURE SHALL BE SIMILAR TO 'BISON' PRE-FAB ENCLOSURE WITH FULL FLOOR.
- 20A, 120V-1Ø CONNECTION FOR SMOKE/FIRE DAMPERS, ALSO PROVIDE LOW-VOLTAGE CONNECTION TO FIRE ALARM SYSTEM. SEE MECHANICAL DRAWINGS FOR EXACT LOCATION OF SMOKE/FIRE DAMPERS.

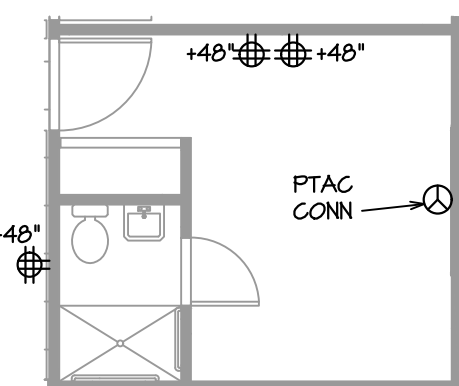


GENSET NOTE:

CONTRACTOR SHALL DISCONNECT AND REMOVE EXISTING GENERATOR AND TRANSFER SWITCH AND RETURN TO THE OWNER. ALSO REMOVE EXISTING GAS PIPING BACK TO MAIN SERVICE AND REMOVE EXISTING WOOD FENCING. COORDINATE WITH OWNER TO MINIMIZE SHUT-DOWN TIME.

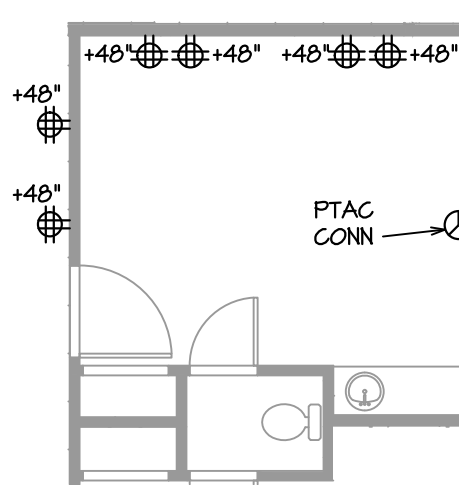
GENSET AND FENCING DETAIL

NO SCALE.



RESIDENT ROOM TYPE G-1 ELECTRICAL

SCALE: 1/8" = 1'-0"



RESIDENT ROOM TYPE F-2 ELECTRICAL

SCALE: 1/8" = 1'-0"

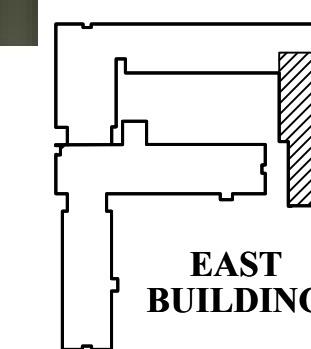
GENERAL PLAN NOTES:

- E.G. SHALL VERIFY EXISTING CONDITIONS AND CONTACT ENGINEER WITH ANY DISCREPANCIES.
- E.G. SHALL UPDATE EXISTING PANEL DIRECTORIES FROM ANY NEW WORK THAT IS REQUIRED.
- ALL NEW RECEPTACLES FED FROM EMERGENCY PANEL SHALL BE HOSPITAL GRADE AND SHALL BE RED IN COLOR. MINIMUM CONDUIT SIZE SHALL BE 3/4".
- ALL NEW RECEPTACLE CIRCUITS SHALL BE RUN RECESSED IN EXISTING WALLS. RUN BRANCH CIRCUIT IN ATTIC AND THEN DOWN EXISTING WALLS.
- IT IS INCUMBENT ON THE CONTRACTOR TO FAMILIARIZE HIMSELF WITH ALL FIELD CONDITIONS INCLUDING, BUT NOT LIMITED TO, ATTIC SPACE FRAMING, ROUTING OF EXISTING DRY SPRINKLER SYSTEM IN ATTIC, LIMITED WORKING SPACE IN ATTIC AND DEMO AND REPAIR REQUIREMENTS THAT HE WILL BE REQUIRED FOR INSTALLATION.
- CONTRACTOR SHALL RECONNECT THE FOLLOWING SYSTEMS TO THE NEW EMERGENCY PANELS:
 a. FIRE ALARM (ELS)
 b. NURSE CALL (EGR)
- CONTRACTOR SHALL MAKE ONE-LINE DIAGRAM OF ENTIRE FACILITY AFTER ALL WORK IS COMPLETE. ALSO VERIFY ALL FEEDER SIZES.
- CONNECT ALL EMERGENCY, NIGHT-LIGHTS AND EXIT LIGHTS TO LIFE SAFETY PANEL 'ELS'.



ELECTRICAL SITE PLAN

NO SCALE.



KEY PLAN

ELECTRICAL POWER PLAN (EAST BLDG)

SCALE: 1/8" = 1'-0"

Architect:
 P.A. Summers Architecture, LLC
 2170 South State Road 39
 Danville, Indiana 46122
 Phone: 317-509-9236
 P.A.Sarchitect@gmail.com



DESIGN-AIRE ENGINEERING, INC
 2707 Rand Road
 Indianapolis, IN 46241
 voice: 317-464-9090 fax: 317-464-9393
 www.daeengineering.com

Mechanical, Electrical, & Energy Engineering

JOB NO.:	18169.1
DATE:	January 15, 2020
DRAWN BY:	ILP
CHECKED BY:	WS
REVISIONS:	



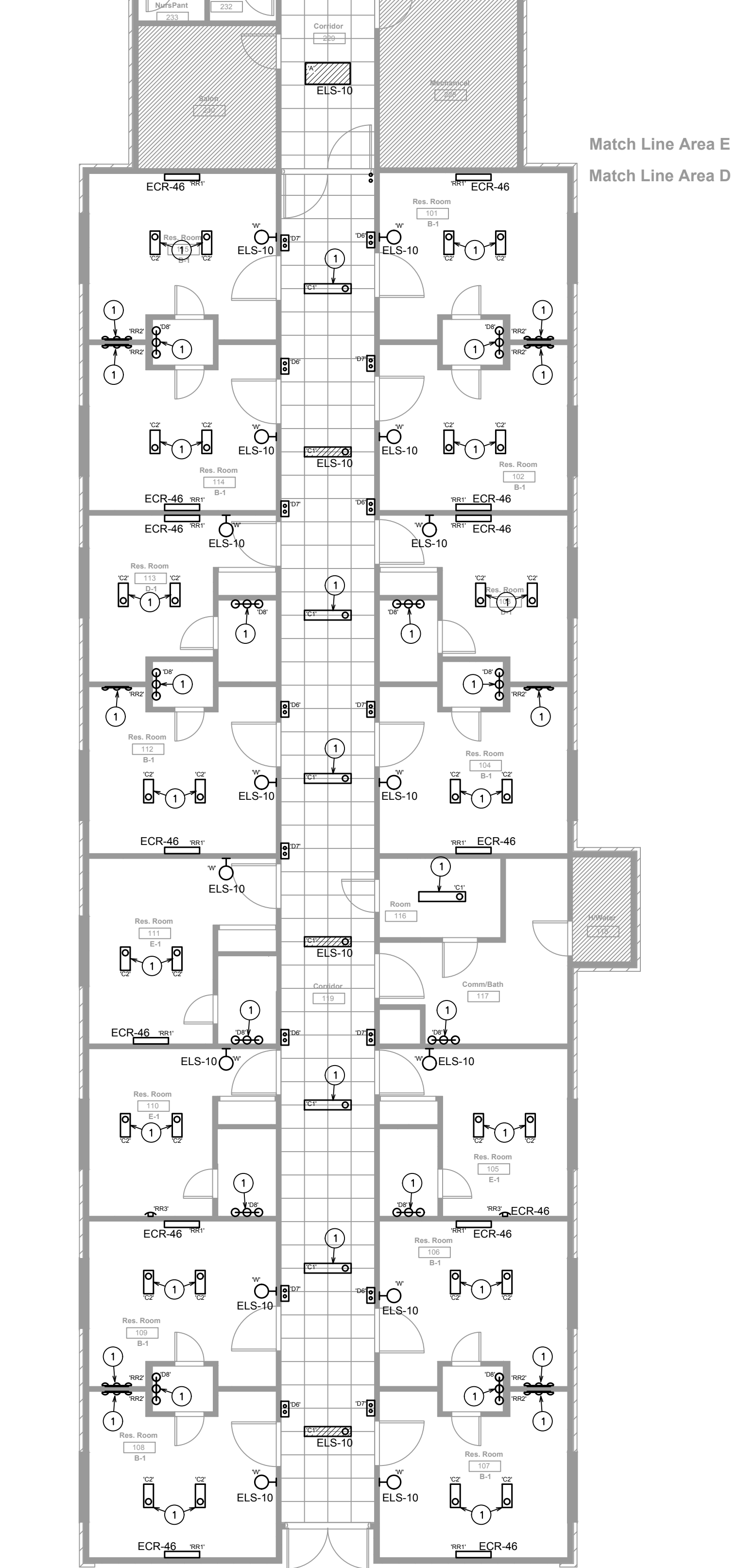
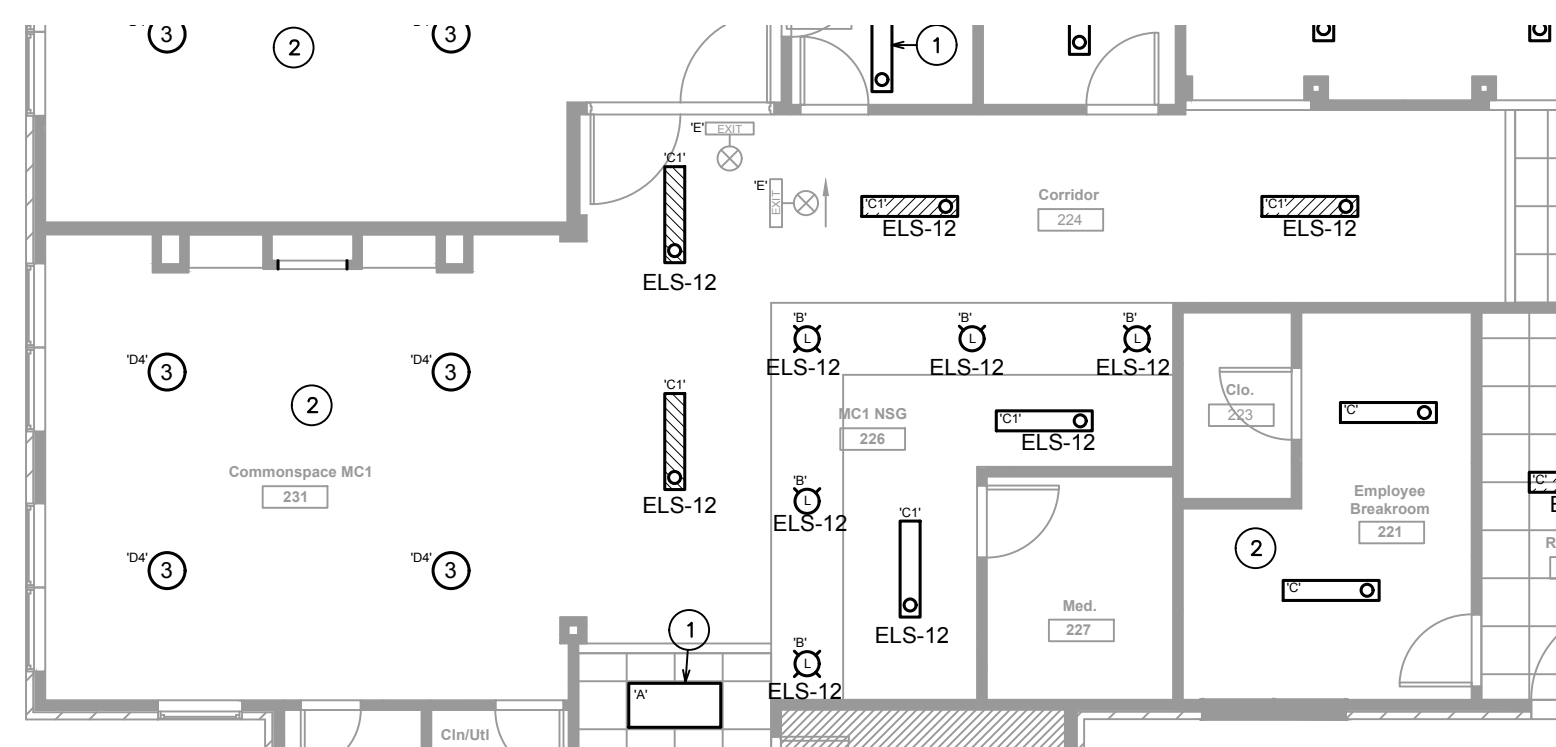
William J. Snodgrass

This drawing and its contents are the property of P.A. Summers Architecture, LLC and shall not be reproduced in whole or in part by any means, mechanical or electronic, without express written permission of P.A. Summers Architecture, LLC.
 Copyright 2016 by P.A. Summers Architecture, LLC.

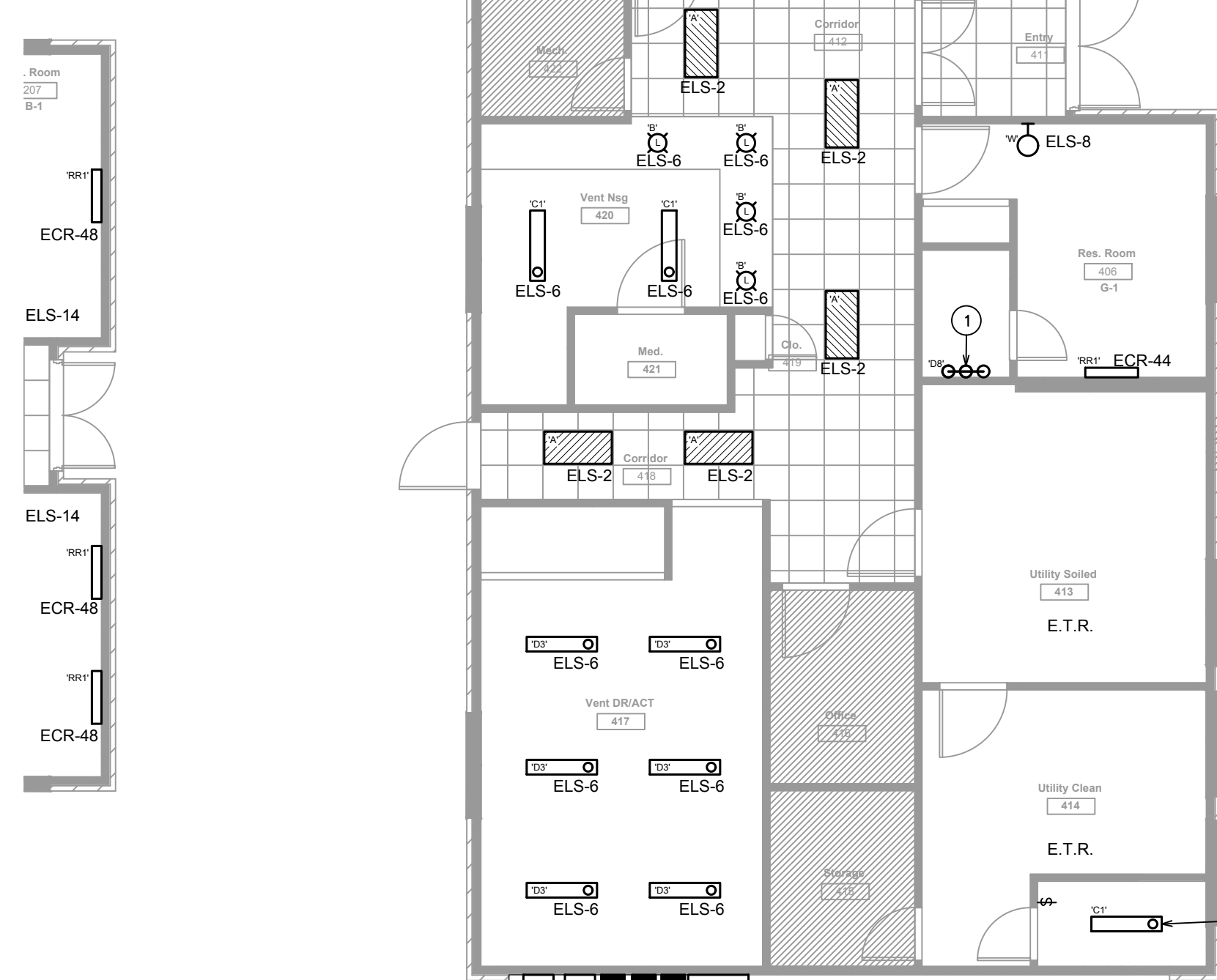
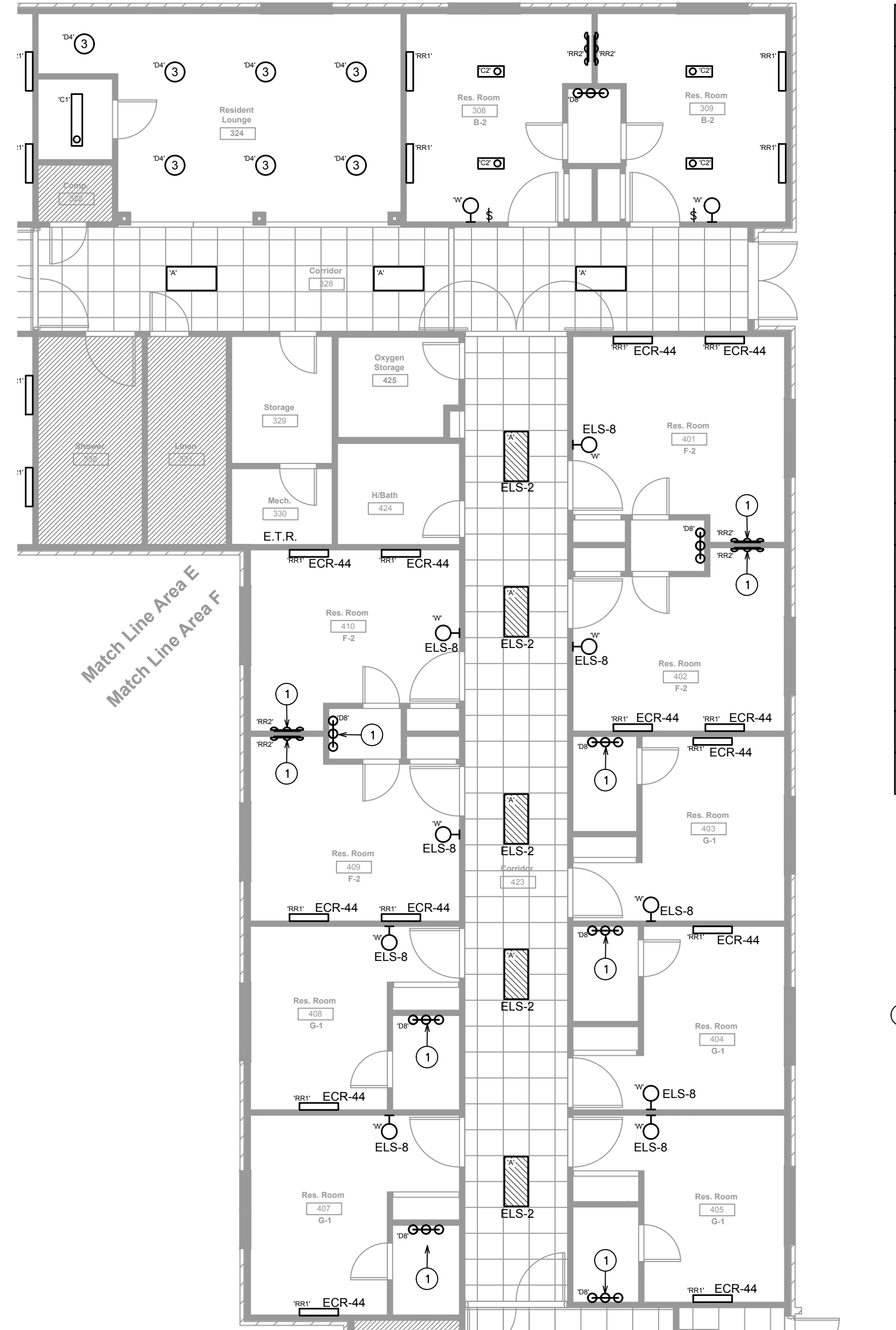
Renovations To
MAJESTIC CARE CONNERSVILLE
 1029 E. 5th Street
 Connersville, Indiana 47331

Prepared For:
Majestic Care Medical & Health
 8935 Technology Drive
 Fishers, Indiana 46038

SHEET
E101
 ELECTRICAL POWER PLAN



1 LIGHTING PLAN — EAST BUILDING — AREA D
SCALE: 1/8" = 1'-0"



2 LIGHTING PLAN — EAST BUILDING — AREA F
SCALE: 1/8" = 1'-0"

SCHEDULE OF LIGHT FIXTURES			
Mark	Mounting	Lamps	Description
RECESSED	LED	7'x4'	RECESSED GRID TYPE TROFFER LITHONIA 428L14-48L-ADP-EZ1-LP835 (FIXTURE REPLACES REMOVED FLUORESCENT FIXTURE. FIELD VERIFY LOCATION)
RECESSED	LED	4'	LED SURFACE WRAPAROUND LITHONIA 48L41P90 (FIXTURE REPLACES REMOVED FLUORESCENT FIXTURE. FIELD VERIFY LOCATION)
CEILING	LED	4'	LED SURFACE WRAPAROUND LITHONIA 48L41P90 (FIXTURE REPLACES REMOVED FLUORESCENT FIXTURE. FIELD VERIFY LOCATION)
CEILING	LED	2'	LED SURFACE WRAPAROUND LITHONIA 48L41P90 (FIXTURE REPLACES REMOVED FLUORESCENT FIXTURE. FIELD VERIFY LOCATION)
PENDANT (COORD. HEIGHT W/ OWNER)	INCAND	GRAND BANK 6 LIGHT CHANDELIER-AUBURN STAINED KICHLER 43190AUB	
PENDANT (COORD. HEIGHT W/ OWNER)	INCAND	GRAND BANK 6 LIGHT CHANDELIER-AUBURN STAINED KICHLER 43190AUB	
CEILING	LED	LED CAMBRIDGE LINEAR FLUSH MOUNT LITHONIA FML 3084O CAML WH	
CEILING	INCAND	SMALLER 18" 3 LIGHT SEMI FLUSH-BRUSHED NICKEL N400-K4129	
CEILING	INCAND	18" 3 LIGHTS SEMI-FLUSH MOUNT CEILING N400-K4129	
WALL MOUNT AT 7'2" A.F.F.	LED	NEW NURSE CALL LIGHT	TBD
WALL MOUNT AT 7'2" A.F.F.	LED	NEW NURSE CALL LIGHT	TBD
WALL	INCAND	AVERY 3-LIGHT BATH LIGHT NI-BRUSHED NICKEL KICHLER 436970M (FIXTURE REPLACES REMOVED FLUORESCENT FIXTURE. FIELD VERIFY LOCATION)	
PENDANT	INCAND	KRINY 1-LIGHT PENDANT OZ-COLLE BRONZE KICHLER 434880Z	
PENDANT (COORD. HEIGHT W/ OWNER)	INCAND	CROSSBY 5-LIGHT LINEAR CHANDELIER OZ-COLLE BRONZE KICHLER 439960Z (FIXTURE REPLACES REMOVED FLUORESCENT FIXTURE. FIELD VERIFY LOCATION)	
CEILING	LED	LED CEILING MOUNTED EXIT LIGHT	
WALL	LED	OVERHEAD LIGHT FIXTURE PLUMBING LED OVERHEAD LIGHT WITH PULL CHAIN (FIXTURE REPLACES REMOVED FLUORESCENT FIXTURE. FIELD VERIFY LOCATION)	
WALL	LED	VANITY 3-LIGHT LED BATH LIGHT NI-BRUSHED NICKEL KICHLER 107996LED (FIXTURE REPLACES REMOVED FLUORESCENT FIXTURE. FIELD VERIFY LOCATION)	
WALL	LED	11" LED WALL SPOON NI-BRUSHED NICKEL KICHLER 107996LED (FIXTURE REPLACES REMOVED FLUORESCENT FIXTURE. FIELD VERIFY LOCATION)	
WALL	LED	WALL MOUNTED LOW-LEVEL NIGHT LIGHT AT 4'18" W/AL WHITE FACE PLATE AND BUILT-IN PHOTOCELL KENALL MMSL-VRMM-2L35K-OV-BPC	

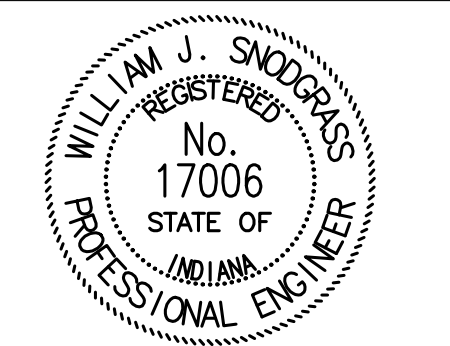
GENERAL PLAN NOTES:
1. SEE SHEET E205 FOR SWITCHING IN RESIDENCE ROOMS.

PLAN NOTES:
1. CONNECT NEW LIGHT FIXTURES TO EXISTING NORMAL LIGHTING CIRCUIT IN THIS ROOM.
2. CONNECT NEW LIGHT FIXTURES IN THIS ROOM TO EXISTING NORMAL LIGHTING CIRCUIT FEEDING THIS AREA.

Architect:
P.A. Summers Architecture, LLC
2170 South State Road 39
Danville, Indiana 46122
Phone: 317-509-9236
PASarchitect@gmail.com



JOB NO.: 18169.1
DATE: January 15, 2020
DRAWN BY: PAS
CHECKED BY: PAS
REVISIONS:



William J. Snodgrass

This drawing and its contents are the property of P.A. Summers Architecture, LLC and shall not be reproduced in whole or in part by any means, mechanical or electronic, without express written permission of P.A. Summers Architecture, LLC.
Copyright 2016 by P.A. Summers Architecture, LLC.

Renovations To
MAJESTIC CARE CONNERSVILLE
1029 E. 5th Street
Connerville, Indiana 47331

Prepared For:
Majestic Care Medical & Health
8935 Technology Drive
Fishers, Indiana 46038

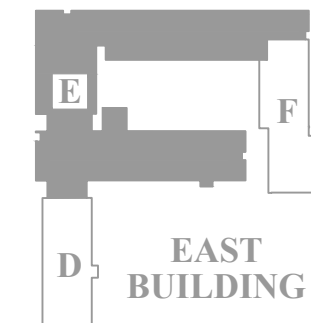
SHEET
E203
ELECTRICAL LIGHTING PLANS



GENERAL PLAN NOTES:
 1. SEE SHEET E205 FOR SWITCHING IN RESIDENCE ROOMS.

PLAN NOTES:
 1. CONNECT NEW LIGHT FIXTURES TO EXISTING NORMAL LIGHTING CIRCUIT IN THIS ROOM.
 2. CONNECT NEW LIGHT FIXTURES IN THIS ROOM TO EXISTING NORMAL LIGHTING CIRCUIT FEEDING THIS AREA.

SCHEDULE OF LIGHT FIXTURES			
Mark	Mounting	Lamps	Description
Ⓚ	RECESSED	LED	2x4 RECESSED GRID TYPE TROFFER LITHONIA #BL4-LP840-ADP-1P-RS (FIXTURE REPLACES REMOVED FLUORESCENT FIXTURE. FIELD VERIFY LOCATION)
Ⓛ	RECESSED	LED	6" ROUND RECESSED DOWNLIGHT OPEN REFLECTOR LITHONIA #LDN6-3520-LOGAR-L-MVOLT-EZ1
Ⓜ	CEILING	LED	4" LED SURFACE WRAPAROUND LITHONIA #BL4-LP840 (FIXTURE REPLACES REMOVED FLUORESCENT FIXTURE. FIELD VERIFY LOCATION)
Ⓝ	CEILING	LED	7" LED SURFACE WRAPAROUND LITHONIA #BL2-LP840 (FIXTURE REPLACES REMOVED FLUORESCENT FIXTURE. FIELD VERIFY LOCATION)
Ⓟ	PENDANT (COORD. HEIGHT W/ OWNER)	INCANDESCENT	GRAND BANK 6 LIGHT CHANDELIER-AGBURN STAINED NICKEL-43190AUB
Ⓠ	PENDANT (COORD. HEIGHT W/ OWNER)	INCANDESCENT	GRAND BANK 6 LIGHT CHANDELIER-AGBURN STAINED NICKEL-43190AUB
Ⓡ	CEILING	LED	LED CAMBRIDGE LINEAR FLUSH MOUNT LITHONIA #FL-3940-CAM-VH
Ⓢ	CEILING	INCANDESCENT	SHARLENE 18" 3 LIGHT SEMI FLUSH-BRUSHED NICKEL KICHLER 43652N
Ⓣ	CEILING	INCANDESCENT	15" 3 LIGHTS SEMI-FLUSH MOUNT CEILING NUVO 60-4729
Ⓤ	WALL MOUNT AT 7'2" A.F.F.	LED	NEW NURSE CALL LIGHT T80
Ⓥ	WALL MOUNT AT 7'2" A.F.F.	LED	NEW NURSE CALL LIGHT T80
Ⓦ	WALL	INCANDESCENT	AVERY 5 LIGHT BATH LIGHT W-BRUSHED NICKEL KICHLER 45979N (FIXTURE REPLACES REMOVED FLUORESCENT FIXTURE. FIELD VERIFY LOCATION)
Ⓧ	PENDANT	INCANDESCENT	WANNY LIGHT PENDANT OZ-OLDE BRONZE KICHLER 1079ANLE
Ⓨ	PENDANT (COORD. HEIGHT W/ OWNER)	INCANDESCENT	CROSBY 5 LIGHT LINEAR CHANDELIER OZ-OLDE BRONZE KICHLER 43652N (VF CEILING HEIGHT AND CONFIRM FIXTURE ROOM CAN BE CUT IN FIELD BEFORE ORDERING)
Ⓩ	CEILING	LED	LED CEILING MOUNTED EXIT LIGHT
Ⓛ	WALL	LED	OVERBID LIGHT FIXTURE PL MOUTH LED OVERBID LIGHT WITH PULL CHAIN (FIXTURE REPLACES REMOVED FLUORESCENT FIXTURE. FIELD VERIFY LOCATION)
Ⓜ	WALL	LED	WANNY 5 LIGHT BATH LIGHT W-BRUSHED NICKEL KICHLER 1079ANLE (FIXTURE REPLACES REMOVED FLUORESCENT FIXTURE. FIELD VERIFY LOCATION)
Ⓝ	WALL	LED	11" LED WALL SCENE W-BRUSHED NICKEL KICHLER 1079ANLE (FIXTURE REPLACES REMOVED FLUORESCENT FIXTURE. FIELD VERIFY LOCATION)
Ⓟ	WALL	LED	WALL MOUNTED COVERLED NIGHT LIGHT AT 18" W/FLAT WHITE FACE PLATE AND BUILT-IN PHOTOCELL KENALL #KCSL-VR-MN-2L35K-0V-8PC



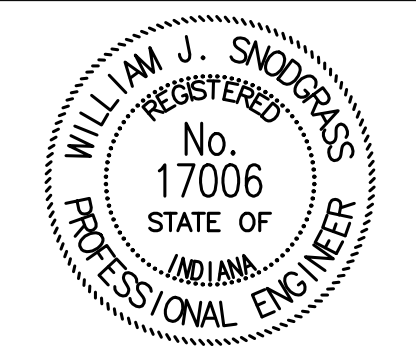
KEY PLAN

1 LIGHTING PLAN - EAST BUILDING - AREA E
 SCALE: 1/8" = 1'-0"

Architect:
 P.A. Summers Architecture, LLC
 2170 South State Road 39
 Danville, Indiana 46122
 Phone: 317-509-9236
 P.A.Sarchitect@gmail.com



JOB NO.: 18169.1
 DATE: January 15, 2020
 DRAWN BY: PAS
 CHECKED BY: PAS
 REVISIONS:



William J. Snodgrass

This drawing and its contents are the property of P.A. Summers Architecture, LLC and shall not be reproduced in whole or in part by any means, mechanical or electronic, without express written permission of P.A. Summers Architecture, LLC.
 Copyright 2016 by P.A. Summers Architecture, LLC.

Renovations To
MAJESTIC CARE CONNERSVILLE
 1029 E. 5th Street
 Connorsville, Indiana 47331

Prepared For:
Majestic Care Medical & Health
 8935 Technology Drive
 Fishers, Indiana 46038

SHEET
E204
 ELECTRICAL LIGHTING PLANS
 #18169.1

Architect:
P.A. Summers Architecture, LLC
2170 South State Road 39
Danville, Indiana 46122
Phone: 317-509-9236
PASArchitect@gmail.com



DESIGN-AIRE ENGINEERING, INC
2707 Rind Road Indianapolis, IN 46241
voice: 317-464-9090 fax: 317-464-9393
www.daeengineering.com

Mechanical, Electrical, & Energy Engineering

JOB NO.: 18169.1

DATE: January 15, 2020

DRAWN BY: PAS

CHECKED BY: PAS

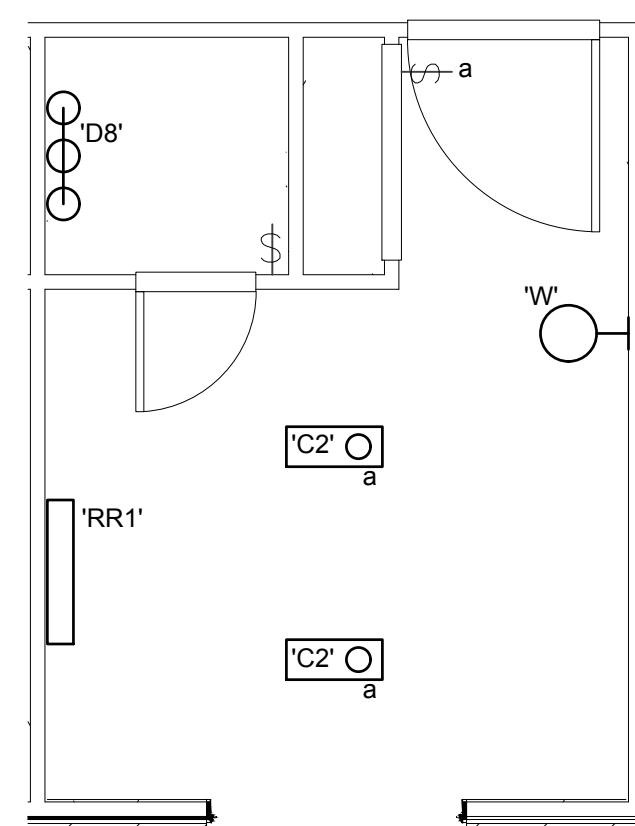
REVISIONS:



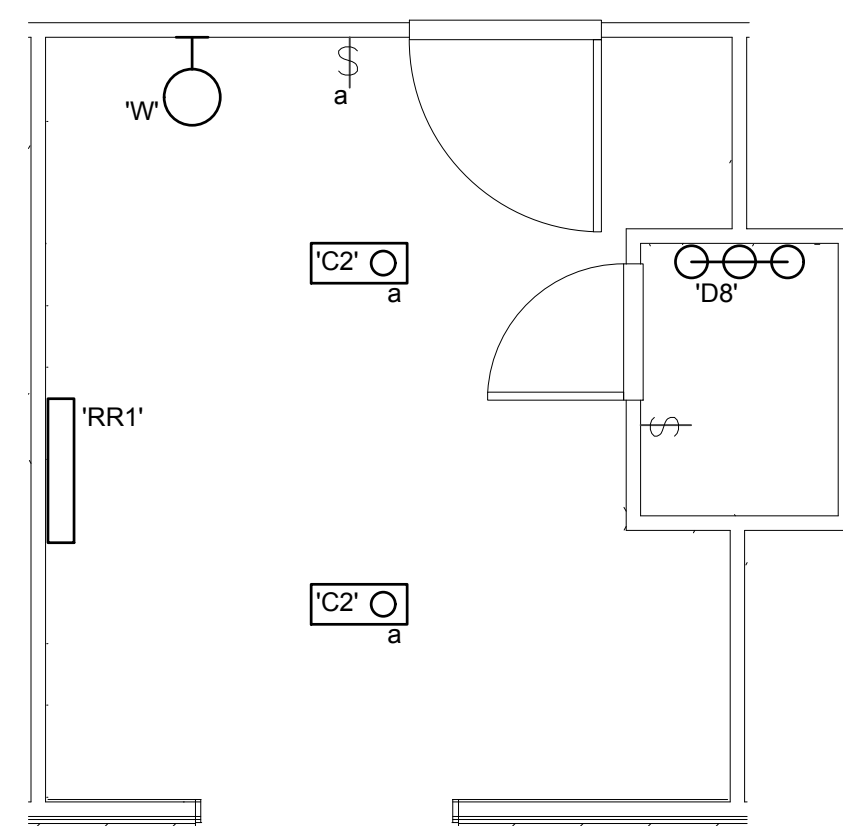
William J. Snodgrass

This drawing and its contents are the property of P.A. Summers Architecture, LLC and shall not be reproduced in whole or in part by any means, mechanical or electronic, without express written permission of P.A. Summers Architecture, LLC.
Copyright 2018 by P.A. Summers Architecture, LLC.

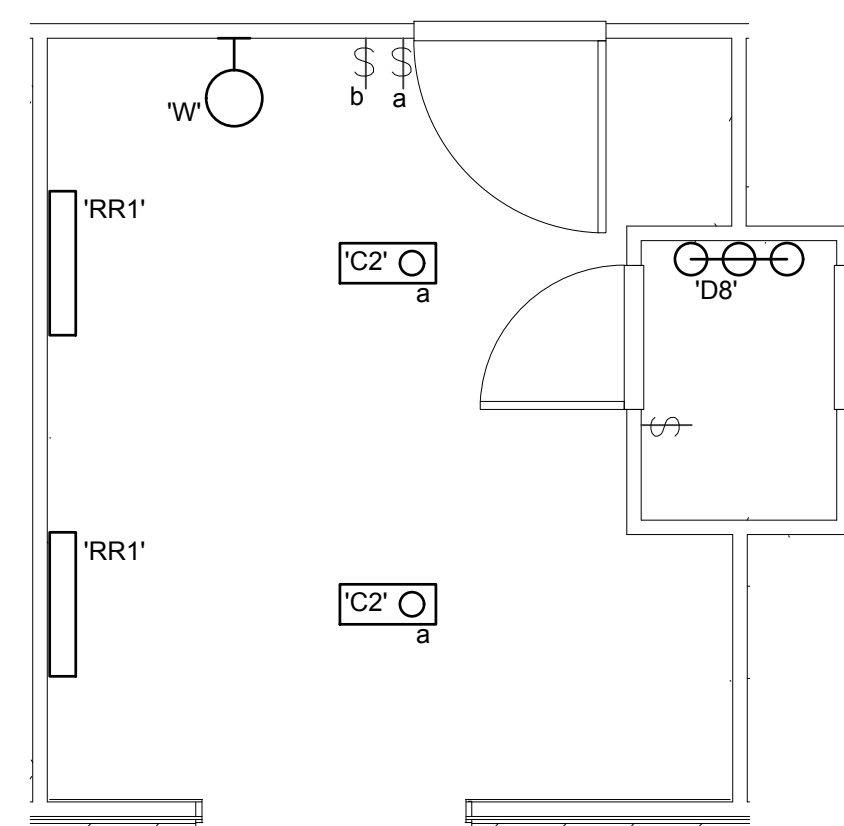
SCHEDULE OF LIGHT FIXTURES		
Mark	Mounting	Lamps Description
⊠	RECESSED	LED 2x4 RECESSED GRID TYPE TROFFER LITHONIA KBL14-45L-AD-EZ1-LP33 (FIXTURE REPLACES REMOVED FLUORESCENT FIXTURE. FIELD VERIFY LOCATION)
⊞	RECESSED	LED 8" ROUND RECESSED DOWNLIGHT OPEN REFLECTOR LITHONIA KLDN-3023-LGR-ALD-MVCLT-EZ1
⊠	CEILING	LED 4" LED SURFACE WRAPAROUND LITHONIA KBL14-45L-AD-EZ1-LP33 (FIXTURE REPLACES REMOVED FLUORESCENT FIXTURE. FIELD VERIFY LOCATION)
⊠	CEILING	LED 2" LED SURFACE WRAPAROUND LITHONIA KBL14-45L-AD-EZ1-LP33 (FIXTURE REPLACES REMOVED FLUORESCENT FIXTURE. FIELD VERIFY LOCATION)
⊞	PENDANT (COORD HEIGHT W/ OWNER)	INCAND GRAND BANK 8 LIGHT CHANDELIER-AUBURN STAINED KICHLER 43190AUB
⊞	PENDANT (COORD HEIGHT W/ OWNER)	INCAND GRAND BANK 8 LIGHT CHANDELIER-AUBURN STAINED KICHLER 43193AUB
⊠	CEILING	LED LED CAMBRIDGE LINEAR FLUSH MOUNT LITHONIA FMFL 30640 CAML WH
⊠	CEILING	INCAND SHALENE 18" 3 LIGHT SEMI-FLUSH-BRUSHED NICKEL KICHLER 43929N
⊠	CEILING	INCAND 18" 3 LIGHTS SEMI-FLUSH MOUNT CEILING NVD 60479
⊠	WALL MOUNT AT 72" A.F.F.	LED NEW NURSE CALL LIGHT TBD
⊠	WALL MOUNT AT 72" A.F.F.	LED NEW NURSE CALL LIGHT TBD
⊞	WALL	INCAND AVERY 3-LIGHT BATH LIGHT NI-BRUSHED NICKEL KICHLER 45979N (FIXTURE REPLACES REMOVED FLUORESCENT FIXTURE. FIELD VERIFY LOCATION)
⊞	PENDANT	INCAND KIRBY LIGHT PENDANT 02-OLDS BRONZE KICHLER 43480Z
⊞	PENDANT (COORD HEIGHT W/ OWNER)	INCAND CROSSBY 5 LIGHT LINEAR CHANDELIER 02-OLDS BRONZE KICHLER 439950Z (IF CEILING HEIGHT AND CONFIRM FIXTURE ROD CAN BE CUT IN FIELD BEFORE ORDERING)
⊠	CEILING	LED LED CEILING-MOUNTED EXIT LIGHT
⊠	WALL	LED OVERBID LIGHT FIXTURE PL 1/8" MOUTH LED OVERBID LIGHT WITH PULL CHAIN (FIXTURE REPLACES REMOVED FLUORESCENT FIXTURE. FIELD VERIFY LOCATION)
⊠	WALL	LED VANITY 3-LIGHT LED BATH LIGHT NI-BRUSHED NICKEL KICHLER 10799ALD (FIXTURE REPLACES REMOVED FLUORESCENT FIXTURE. FIELD VERIFY LOCATION)
⊠	WALL	LED 11" LED WALL SCORCE NI-BRUSHED NICKEL KICHLER 10799ALD (FIXTURE REPLACES REMOVED FLUORESCENT FIXTURE. FIELD VERIFY LOCATION)
⊠	WALL	LED WALL MOUNTED LOW-LEVEL NIGHT LIGHT AT 4" 18" W/FLAT WHITE FACE PLATE AND BUILT-IN PHOTOCELL KENALL #M02L-WR-WV-2L3K-2V-0PC



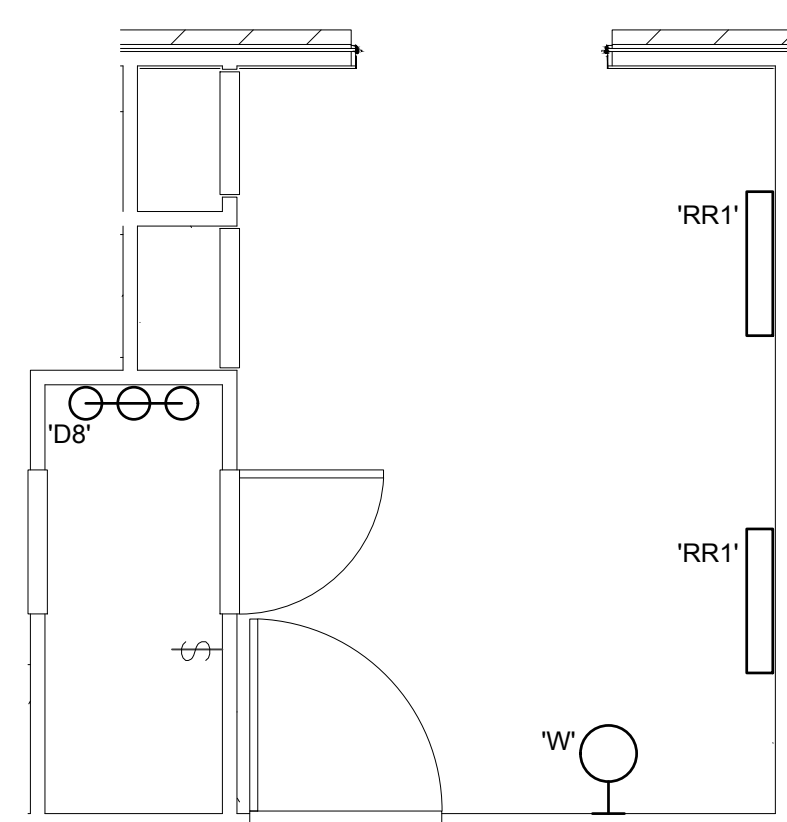
1 LIGHTING PLAN - RR A-1
SCALE: 1/4" = 1'-0"



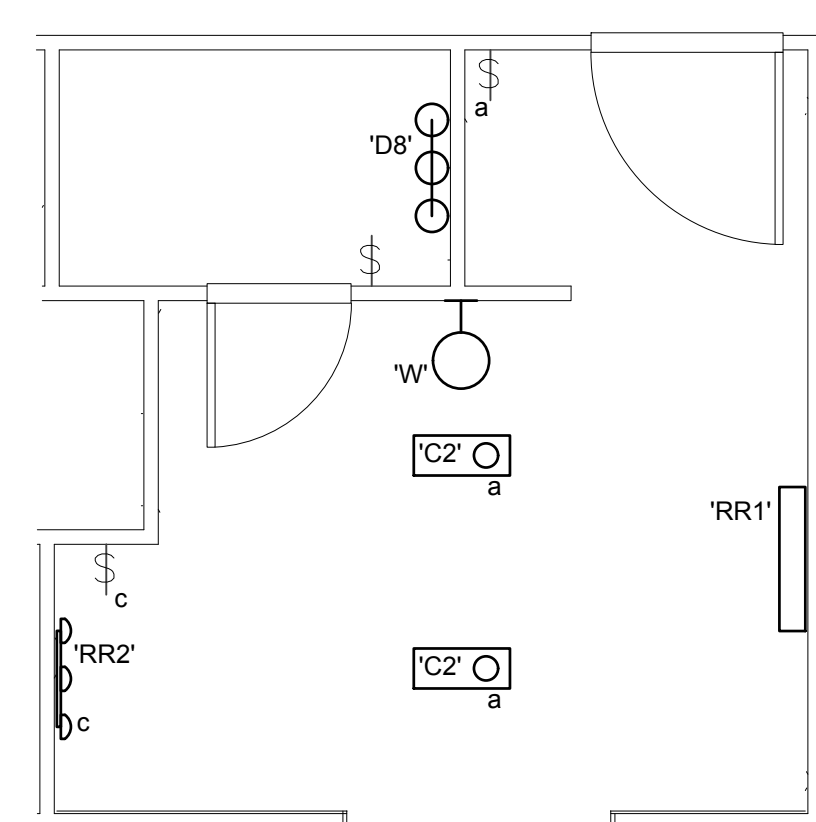
2 LIGHTING PLAN - RR B-1
SCALE: 1/4" = 1'-0"



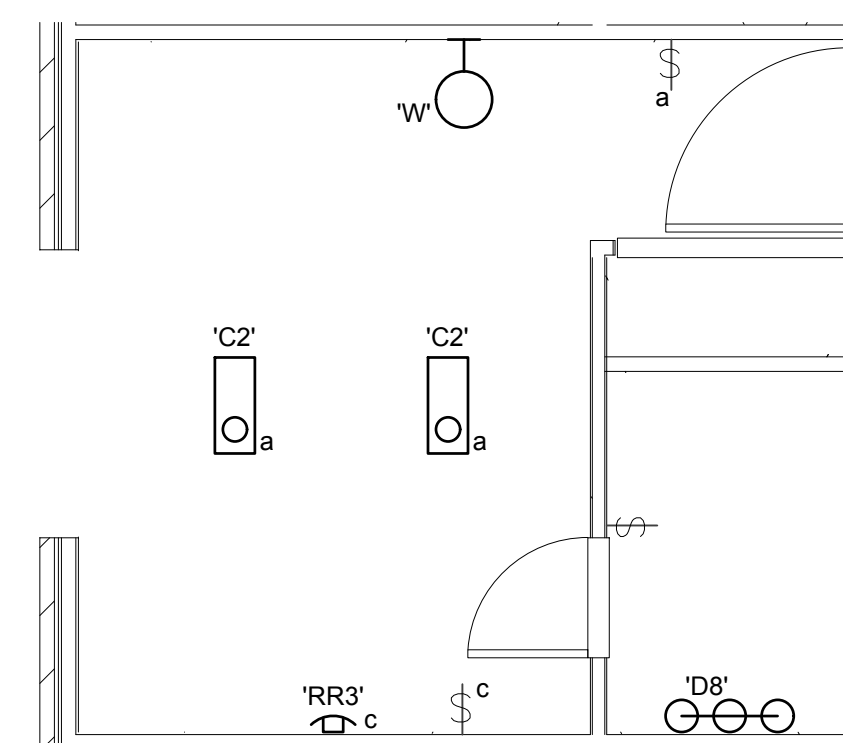
3 LIGHTING PLAN - RR B-2
SCALE: 1/4" = 1'-0"



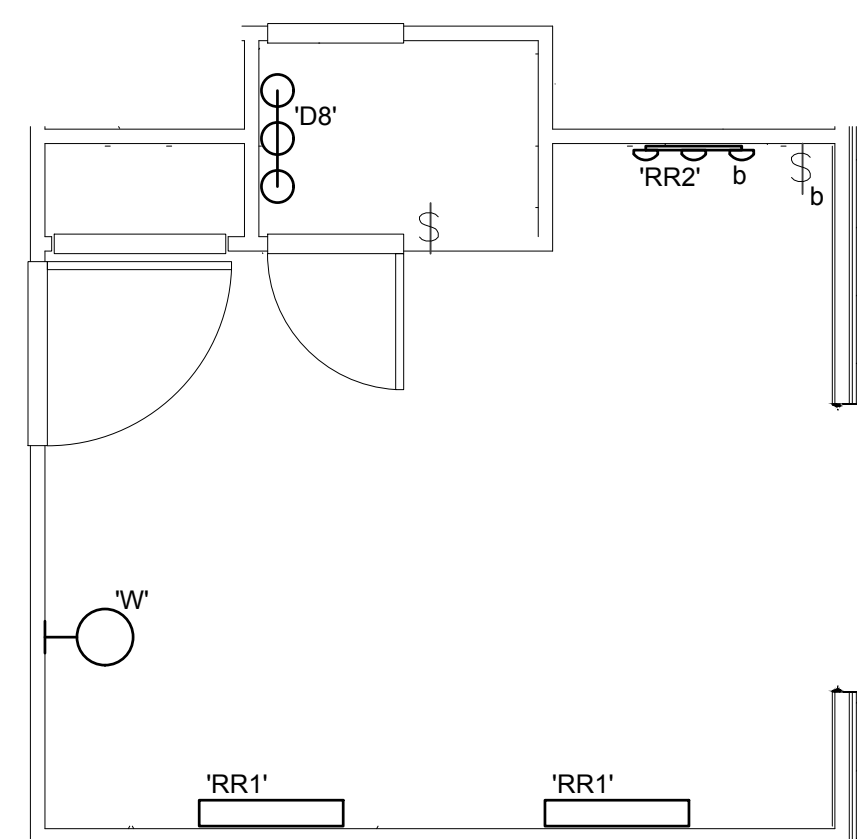
4 LIGHTING PLAN - RR C-2
SCALE: 1/4" = 1'-0"



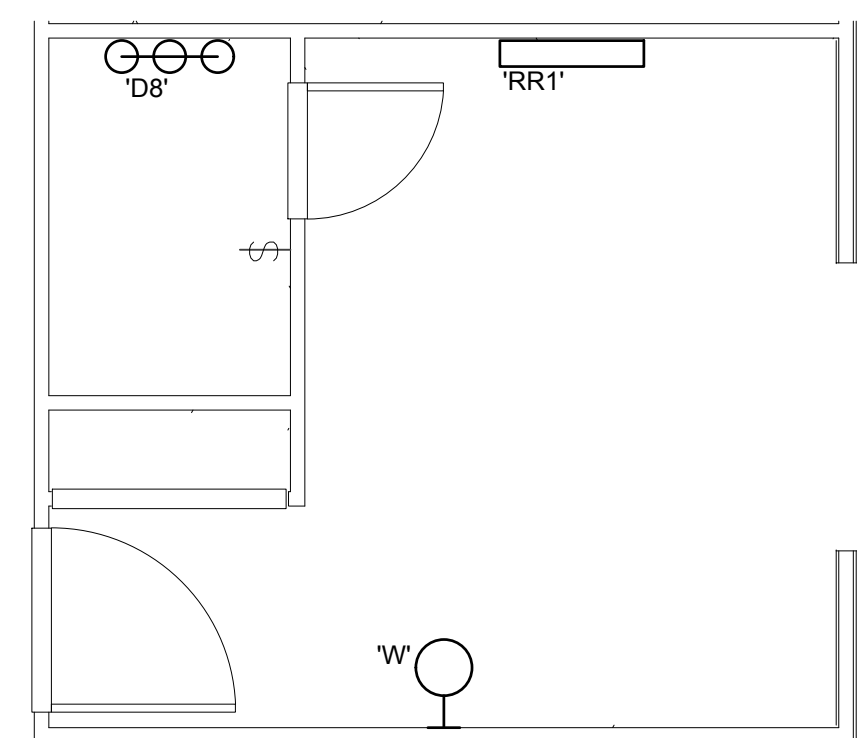
5 LIGHTING PLAN - RR D-1
SCALE: 1/4" = 1'-0"



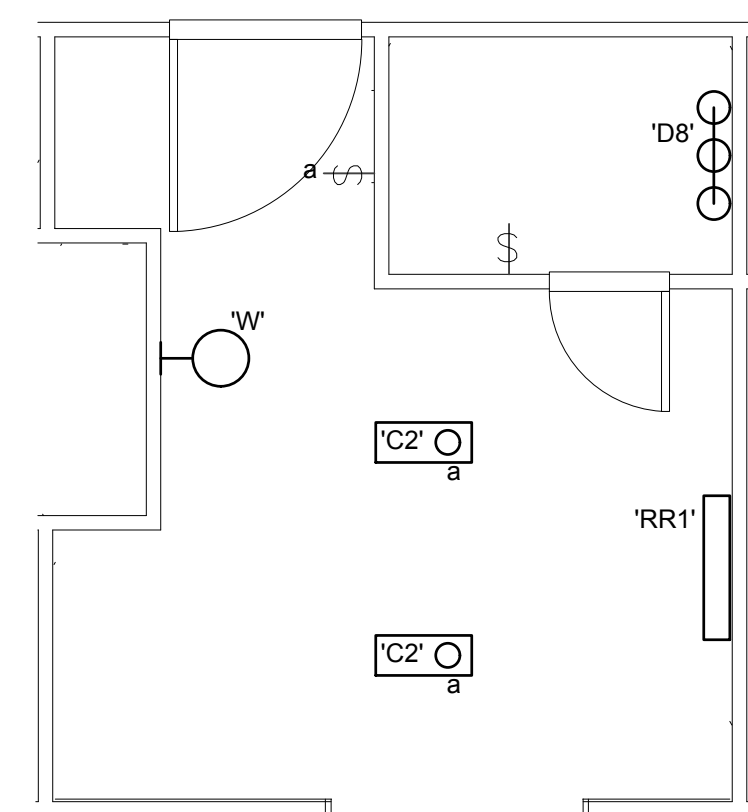
6 LIGHTING PLAN - RR E-1
SCALE: 1/4" = 1'-0"



7 LIGHTING PLAN - RR F-2
SCALE: 1/4" = 1'-0"



8 LIGHTING PLAN - RR G-1
SCALE: 1/4" = 1'-0"



9 LIGHTING PLAN - RR H-1
SCALE: 1/4" = 1'-0"

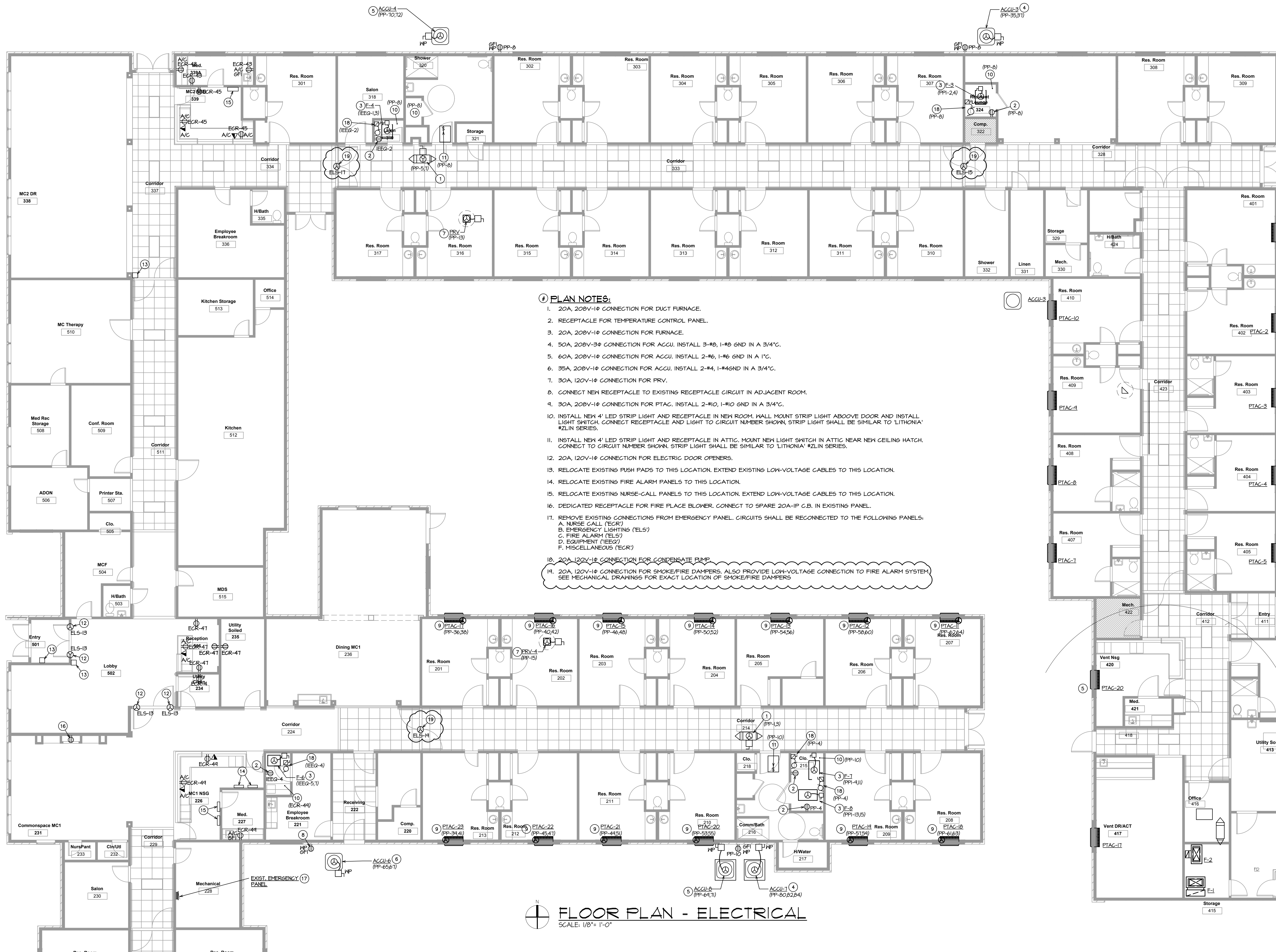
Renovations To
MAJESTIC CARE CONNERSVILLE
1029 E. 5th Street
Connerville, Indiana 47331

Prepared For:

Majestic Care Medical & Health
8935 Technology Drive
Fishers, Indiana 46038

STREY

E205
ELECTRICAL
LIGHTING PLANS



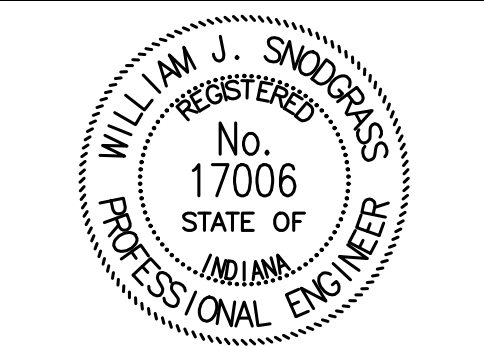
- PLAN NOTES:**
- 20A, 208V-1Ø CONNECTION FOR DUCT FURNACE.
 - RECEPTACLE FOR TEMPERATURE CONTROL PANEL.
 - 20A, 208V-1Ø CONNECTION FOR FURNACE.
 - 50A, 208V-3Ø CONNECTION FOR ACU. INSTALL 3-#8, 1-#6 GND IN A 3/4" C.
 - 60A, 208V-1Ø CONNECTION FOR ACU. INSTALL 2-#6, 1-#6 GND IN A 1" C.
 - 35A, 208V-1Ø CONNECTION FOR ACU. INSTALL 2-#4, 1-#4 GND IN A 3/4" C.
 - 30A, 120V-1Ø CONNECTION FOR PRV.
 - CONNECT NEW RECEPTACLE TO EXISTING RECEPTACLE CIRCUIT IN ADJACENT ROOM.
 - 30A, 208V-1Ø CONNECTION FOR PTAC. INSTALL 2-#10, 1-#10 GND IN A 3/4" C.
 - INSTALL NEW 4' LED STRIP LIGHT AND RECEPTACLE IN NEW ROOM. WALL MOUNT STRIP LIGHT ABOVE DOOR AND INSTALL LIGHT SWITCH. CONNECT RECEPTACLE AND LIGHT TO CIRCUIT NUMBER SHOWN. STRIP LIGHT SHALL BE SIMILAR TO 'LITHONIA' #ZLN SERIES.
 - INSTALL NEW 4' LED STRIP LIGHT AND RECEPTACLE IN ATTIC. MOUNT NEW LIGHT SWITCH IN ATTIC NEAR NEW CEILING HATCH. CONNECT TO CIRCUIT NUMBER SHOWN. STRIP LIGHT SHALL BE SIMILAR TO 'LITHONIA' #ZLN SERIES.
 - 20A, 120V-1Ø CONNECTION FOR ELECTRIC DOOR OPENERS.
 - RELOCATE EXISTING PUSH PADS TO THIS LOCATION. EXTEND EXISTING LOW-VOLTAGE CABLES TO THIS LOCATION.
 - RELOCATE EXISTING FIRE ALARM PANELS TO THIS LOCATION.
 - RELOCATE EXISTING NURSE-CALL PANELS TO THIS LOCATION. EXTEND LOW-VOLTAGE CABLES TO THIS LOCATION.
 - DEDICATED RECEPTACLE FOR FIRE PLACE BLOWER. CONNECT TO SPARE 20A-1P C.B. IN EXISTING PANEL.
 - REMOVE EXISTING CONNECTIONS FROM EMERGENCY PANEL. CIRCUITS SHALL BE RECONNECTED TO THE FOLLOWING PANELS:
 A. NURSE CALL (ECR)
 B. EMERGENCY LIGHTING (ELS)
 C. FIRE ALARM (ELS)
 D. EQUIPMENT (IEEG)
 F. MISCELLANEOUS (ECR)
 - 20A, 120V-1Ø CONNECTION FOR CONDENSATE PUMP
 - 20A, 120V-1Ø CONNECTION FOR SMOKE/FIRE DAMPERS. ALSO PROVIDE LOW-VOLTAGE CONNECTION TO FIRE ALARM SYSTEM. SEE MECHANICAL DRAWINGS FOR EXACT LOCATION OF SMOKE/FIRE DAMPERS

FLOOR PLAN - ELECTRICAL
 SCALE: 1/8" = 1'-0"

Architect:
 P.A. Summers Architecture, LLC
 2170 South State Road 39
 Danville, Indiana 46122
 Phone: 317-509-9236
 P.A.Sarchitect@gmail.com



JOB NO.: 18169.1
 DATE: January 15, 2020
 DRAWN BY: ILP
 CHECKED BY: WS
 REVISIONS:



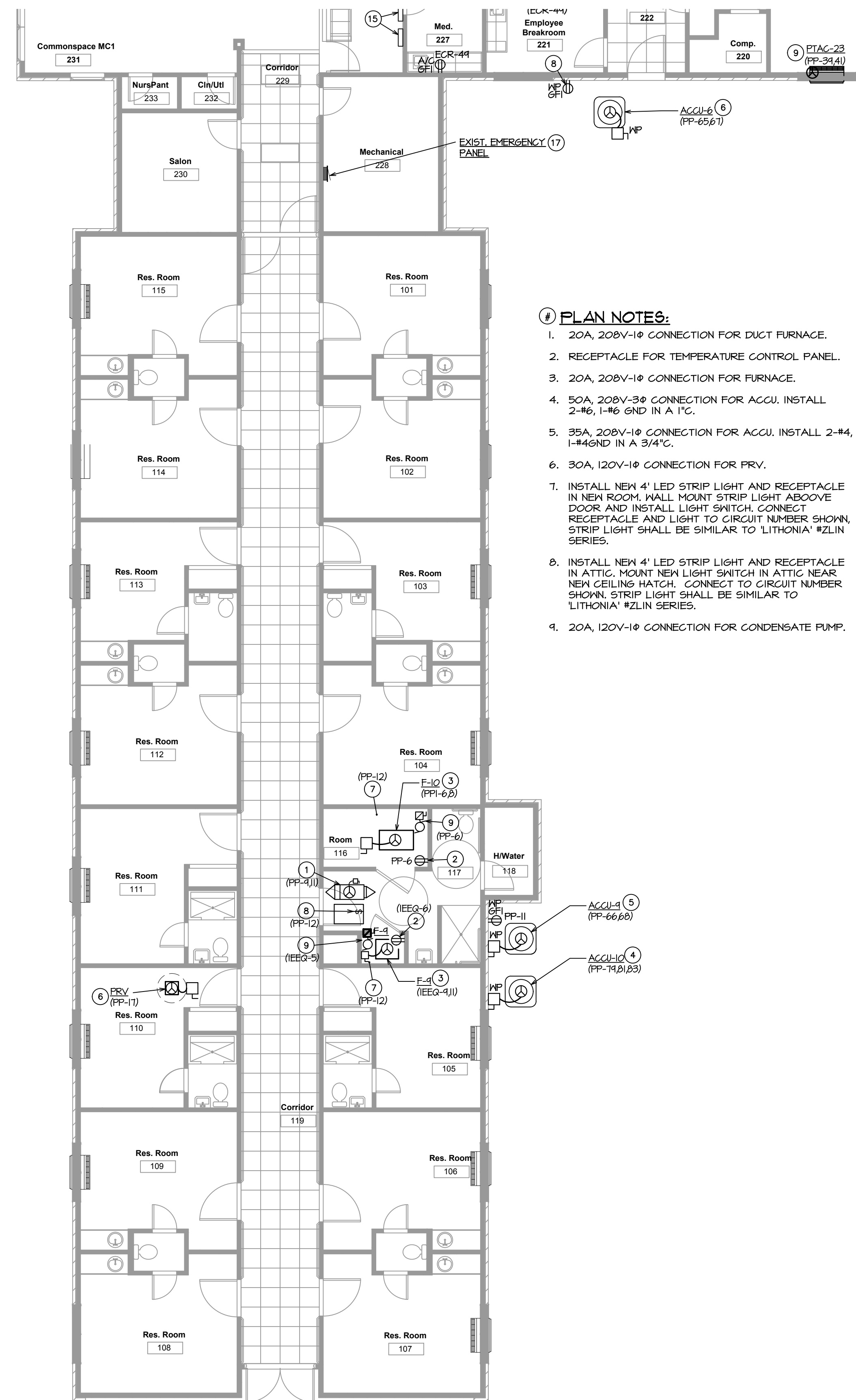
William J. Snodgrass

This drawing and its contents are the property of P.A. Summers Architecture, LLC and shall not be reproduced in whole or in part by any means, mechanical or electronic, without express written permission of P.A. Summers Architecture, LLC.
 Copyright 2018 by P.A. Summers Architecture, LLC.

Renovations To
MAJESTIC CARE CONNERSVILLE
 1029 E. 5th Street
 Connorsville, Indiana 47331

Prepared For:
Majestic Care Medical & Health
 8935 Technology Drive
 Fishers, Indiana 46038

SHEET
E301
 FLOOR PLAN - ELECTRICAL



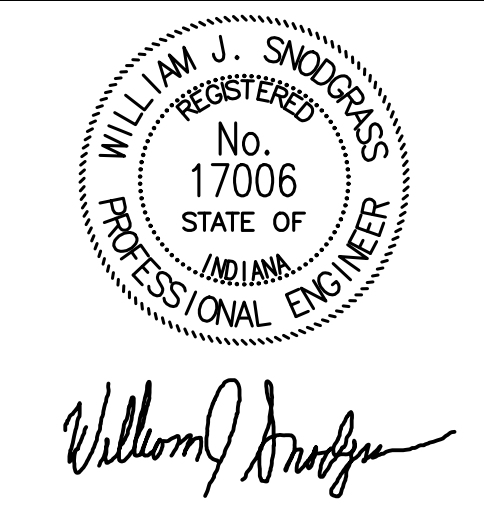
- # PLAN NOTES:**
- 20A, 20BV-1Ø CONNECTION FOR DUCT FURNACE.
 - RECEPTACLE FOR TEMPERATURE CONTROL PANEL.
 - 20A, 20BV-1Ø CONNECTION FOR FURNACE.
 - 50A, 20BV-3Ø CONNECTION FOR ACCU. INSTALL 2-ØØ, 1-ØØ GND IN A 1"Ø.
 - 35A, 20BV-1Ø CONNECTION FOR ACCU. INSTALL 2-#4, 1-#4GND IN A 3/4"Ø.
 - 30A, 120V-1Ø CONNECTION FOR PRV.
 - INSTALL NEW 4' LED STRIP LIGHT AND RECEPTACLE IN NEW ROOM. WALL MOUNT STRIP LIGHT ABOVE DOOR AND INSTALL LIGHT SWITCH. CONNECT RECEPTACLE AND LIGHT TO CIRCUIT NUMBER SHOWN. STRIP LIGHT SHALL BE SIMILAR TO LITHONIA' #ZLN SERIES.
 - INSTALL NEW 4' LED STRIP LIGHT AND RECEPTACLE IN ATTIC. MOUNT NEW LIGHT SWITCH IN ATTIC NEAR NEW CEILING HATCH. CONNECT TO CIRCUIT NUMBER SHOWN. STRIP LIGHT SHALL BE SIMILAR TO LITHONIA' #ZLN SERIES.
 - 20A, 120V-1Ø CONNECTION FOR CONDENSATE PUMP.

FLOOR PLAN - LIGHTING
SCALE: 1/8" = 1'-0"

Architect:
P.A. Summers Architecture, LLC
2170 South State Road 39
Danville, Indiana 46122
Phone: 317-509-9236
P.A.Sarchitect@gmail.com



JOB NO.:	18169.1
DATE:	January 15, 2020
DRAWN BY:	ILP
CHECKED BY:	WS
REVISIONS:	



This drawing and its contents are the property of P.A. Summers Architecture, LLC and shall not be reproduced in whole or in part by any means, mechanical or electronic, without express written permission of P.A. Summers Architecture, LLC.
Copyright 2016 by P.A. Summers Architecture, LLC.

**Renovations
To
MAJESTIC CARE CONNERSVILLE
1029 E. 5th Street
Connorsville, Indiana 47331**

Prepared For:
**Majestic Care
Medical & Health**
8935 Technology Drive
Fishers, Indiana 46038

SHEET
E401
FLOOR PLAN -
LIGHTING

Architect:
P.A. Summers Architecture, LLC
2170 South State Road 39
Danville, Indiana 46122
Phone: 317-509-9236
PASarchitect@gmail.com



DESIGN-AIRE ENGINEERING, INC
2707 Rind Road Indianapolis, IN 46241
voice: 317-464-9090 fax: 317-464-9393
www.daeengineering.com

Mechanical, Electrical, & Energy Engineering

JOB NO.: 18169.1
DATE: January 15, 2020
DRAWN BY: ILP
CHECKED BY: WS
REVISIONS:



William J. Snodgrass

This drawing and its contents are the property of P.A. Summers Architecture, LLC and shall not be reproduced in whole or in part by any means, mechanical or electronic, without express written permission of P.A. Summers Architecture, LLC.
Copyright 2016 by P.A. Summers Architecture, LLC.

Renovations
To
MAJESTIC CARE CONNERSVILLE
1029 E. 5th Street
Connerville, Indiana 47331

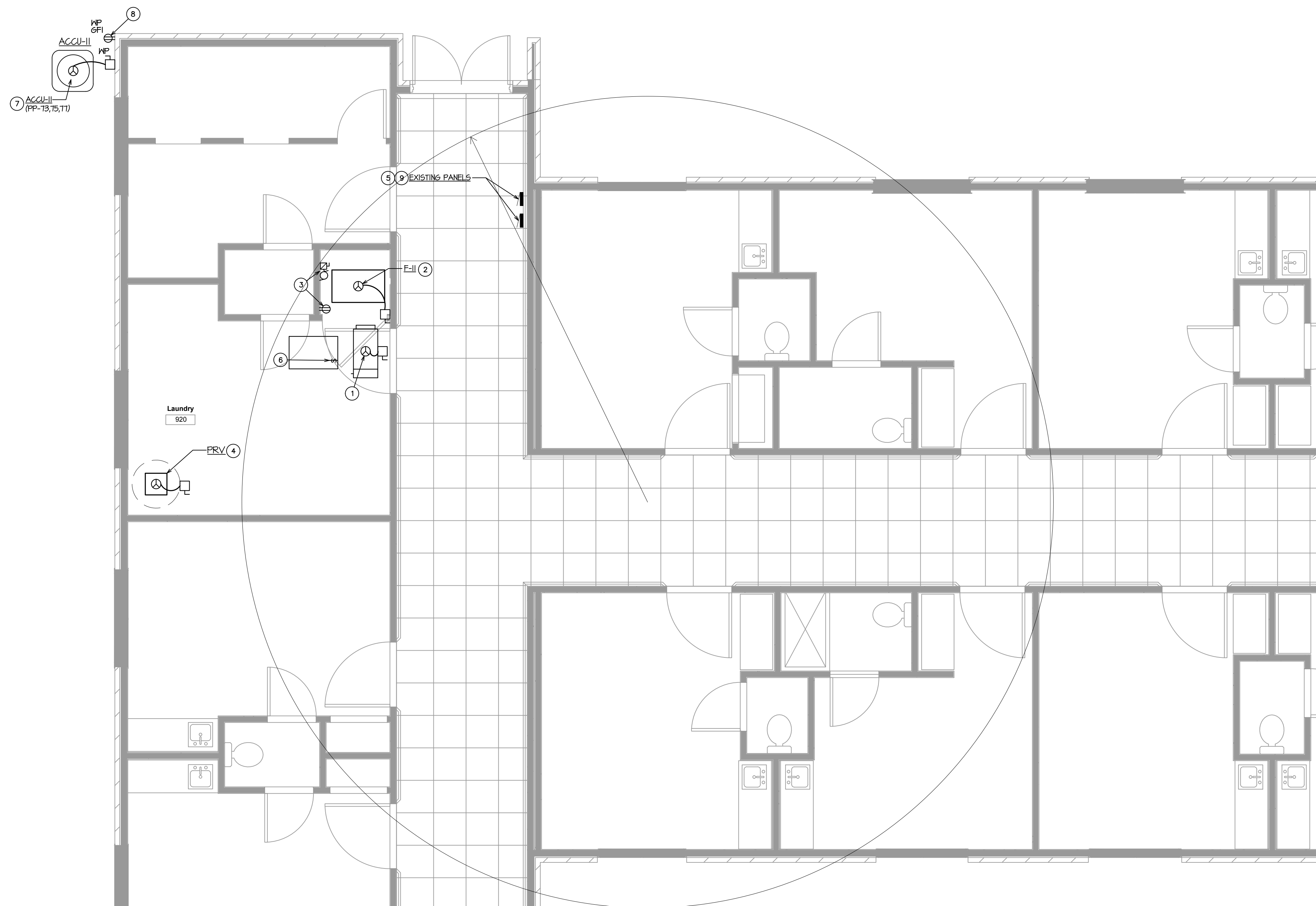
Prepared For:

**Majestic Care
Medical & Health**
8935 Technology Drive
Fishers, Indiana 46038

SHEET

E501
ENLARGED
LAUNDRY
ELECTRICAL
PLAN

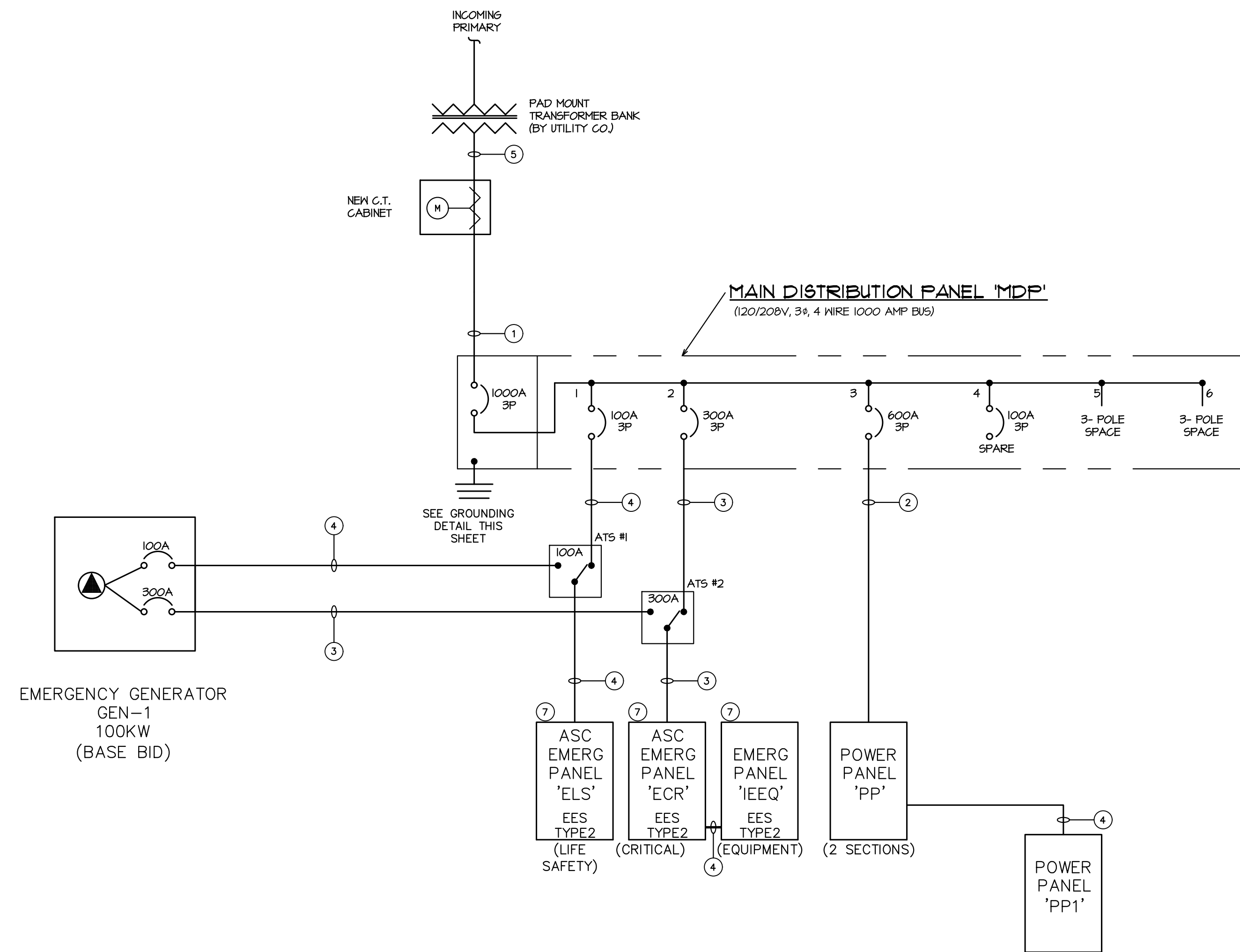
#18169.1



ENLARGED LAUNDRY HVAC PLAN
SCALE: 1/4" = 1'-0"

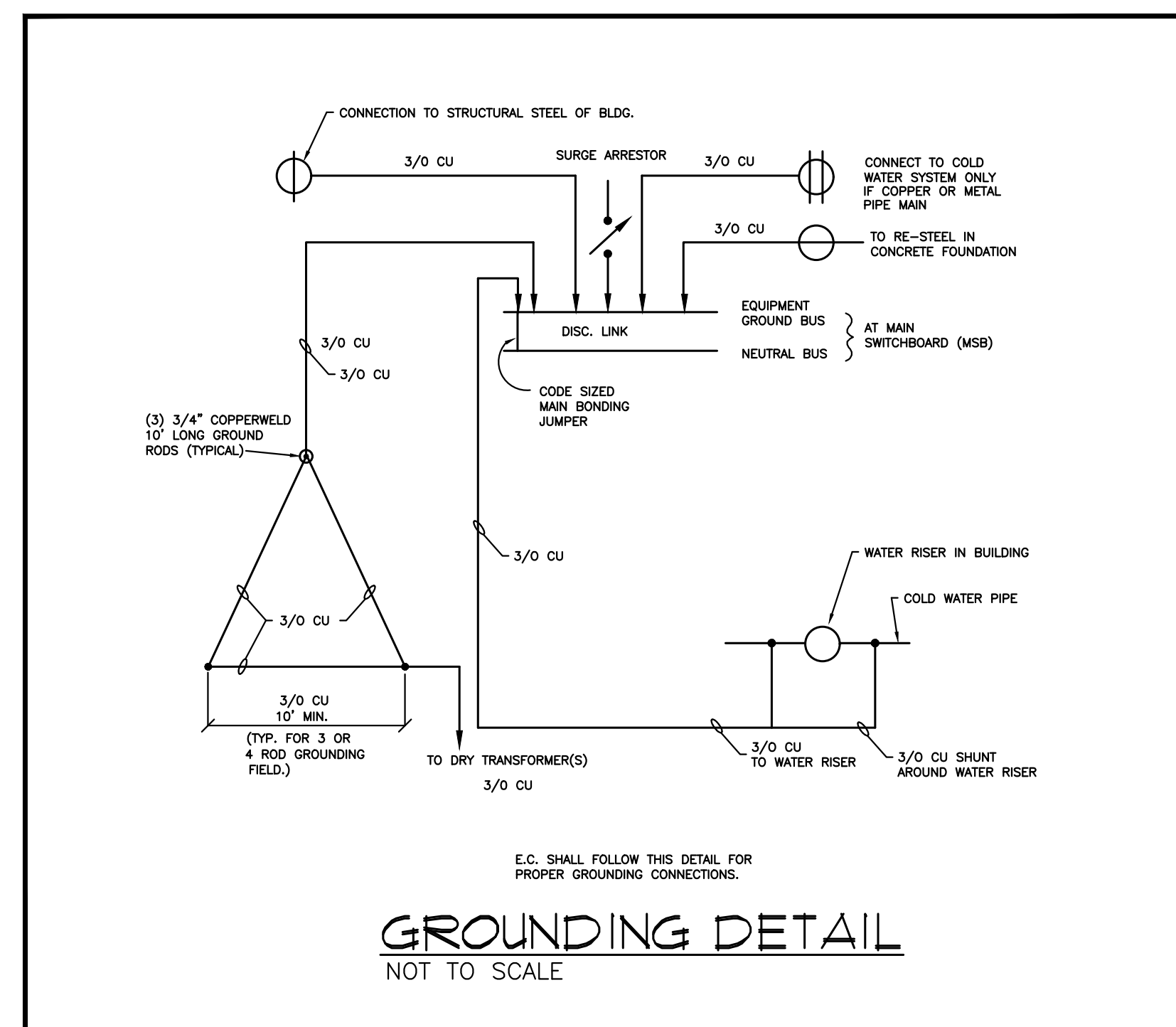
PLAN NOTES:

1. 20A, 208V-1Ø CONNECTION FOR DUCT FURNACE. CONNECT TO NEW 20A-2Ø C.B. IN EXISTING PANEL.
2. 20A, 208V-1Ø CONNECTION FOR GAS FURNACE. CONNECT TO NEW 20A-2Ø C.B. IN EXISTING PANEL.
3. DEDICATED RECEPTACLE FOR TEMPERATURE CONTROL PANEL. CONNECT TO SPARE 20A-1Ø C.B. IN EXISTING PANEL. ALSO FOR CONDENSATE PUMP.
4. 3ØA, 120V-1Ø CONNECTION FOR PRV. INSTALL 2-#10, 1-#10 GND IN A 3/4"Ø. CONNECT TO NEW 3ØA-1Ø C.B. IN EXISTING PANEL.
5. INSTALL NEW 3ØA-1Ø C.B. IN EXISTING PANEL FOR FEED TO NEW PRV. NEW BREAKER SHALL BE COMPATIBLE WITH EXISTING PANEL.
6. INSTALL NEW LED STRIP LIGHT AND RECEPTACLE IN ATTIC. INSTALL NEW SWITCH IN ATTIC NEAR NEW CEILING ACCESS PANEL. CONNECT NEW LIGHT AND RECEPTACLE TO SPARE 20A-1Ø C.B. IN EXISTING PANEL. NEW LIGHT SHALL BE SIMILAR TO LITHONIA® #ZLN SERIES.
7. 5ØA, 208V-3Ø CONNECTION FOR ACQU. INSTALL 3-#3/0, 1-#6 GND IN A 1-1/4"Ø. CONNECT TO 5ØA-3Ø C.B. IN NEW PANEL 'PP'. RUN CONDUIT AND WIRE UNDERGROUND AROUND BUILDING TO NEW PANEL 'PP'.
8. CONNECT NEW RECEPTACLE TO EXISTING RECEPTACLE CIRCUIT IN ADJACENT ROOM.
9. INSTALL TWO (2) NEW 2ØA-2Ø CIRCUIT BREAKERS IN EXISTING PANEL FOR GAS FURNACE AND DUCT FURNACE. NEW BREAKERS SHALL BE COMPATIBLE WITH EXISTING PANEL.



ELECTRICAL ONE-LINE DIAGRAM (BASE BID)
NO SCALE

GENERATOR SCHEDULE						
TAG	VOLTAGE	FUEL	KW/KVA	AMPS	MANUFACTURER/MODEL	NOTES
GEN-1	120/208-3Ø	Diesel	100/125	347	GENERAC SD100	ALL
NOTES						
1. PROVIDE WEATHER ENCLOSURE, BLOCK HEATER, 5 YEAR WARRANTY, COMMON FAULT RELAY, RUN RELAY, ALTERNATOR STRIP HEATER, BATTERY CHARGER, EQUALIZE/FLOAT TYPE, BATTERY HEATER, LINE CIRCUIT BREAKER (NEMA 1 ENCLOSURE), SUB-BASE FUEL TANK FOR (48) HOURS.						
2. APPROVED EQUAL: CATERPILLAR, KOHLER, AND CUMMINS.						
3. CONTACT BRANDON LUCAS WITH EVAPAR AT 317-783-5434 FOR MORE INFORMATION.						
4. COMPLY WITH LOCAL CODES NFPA 110 LEVEL 1 REQUIREMENTS.						
5. PROVIDE AN NFPA 110/99 COMPLIANT ALARM ANNUNCIATOR PANEL FOR REMOTE INDICATION. THE PANEL SHALL HAVE AN ALARM SWITCH THAT WENT WHEN MOVED TO THE OFF POSITION SILENCES THE AUDIBLE ALARM. A TEST/RESET SWITCH MUST BE INCLUDED TO VERIFY THE LIGHTS ARE FUNCTIONAL AND RESET ANY CONDITION AFTER IT HAS CLEARED.						
6. PROVIDE A REMOTE EMERGENCY-STOP SWITCH.						
7. IN ADDITION TO GENERATOR STARTUP AND COMMISSIONING, PERFORM A LOAD TEST FOR 1.5 HOURS USING BUILDING LOAD. IN ADDITION TO THE BUILDING LOAD TEST, LOAD THE GENERATOR AT 30% FOR 30 MINUTES, 50% FOR 30 MINUTES, AND 100% FOR 60 MINUTES.						
8. MAINTENANCE SERVICE: INITIAL MAINTENANCE SERVICE: BEGINNING AT SUBSTANTIAL COMPLETION, PROVIDE 12 MONTHS FULL MAINTENANCE BY SKILLED EMPLOYEES OF MANUFACTURER'S DESIGNATED SERVICE ORGANIZATION. INCLUDE ROUTINE PREVENTIVE MAINTENANCE AS RECOMMENDED BY MANUFACTURER AND ADJUSTING AS REQUIRED FOR PROPER OPERATION. PROVIDE PARTS AND SUPPLIES SAME AS THOSE USED IN THE MANUFACTURE AND INSTALLATION OF ORIGINAL EQUIPMENT.						
100KW DIESEL GENERATOR SHALL BE PACKAGED WITH A DOUBLE WALL, SUB-BASE MOUNTED, UL142 LISTED FUEL TANK WITH A RUNTIME OF 48HOURS AT FULL LOAD CAPACITY.						



GROUNDING DETAIL
NOT TO SCALE

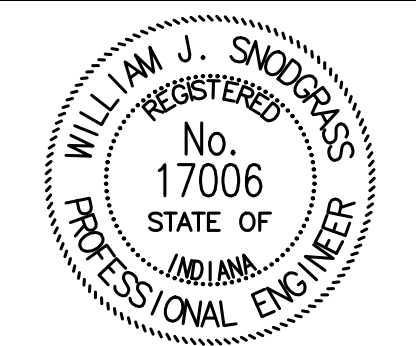
Ⓢ RISER DIAGRAM NOTES:

- (3) 3-1/2" CONDUITS, EACH CONTAINING 4-#500MCM 1-#1/0 GND.
- (2) 3" CONDUITS, EACH CONTAINING 4-#350MCM 1-#2 GND.
- 4-#350MCM, 1-#2 GND IN A 3".
- 4-#3, 1-#8 GND IN A 1-1/4".
- (3) 4" CONDUITS WITH PULL WIRE.
- 3-#3, 1-#8 GND IN A 1-1/4".

Architect:
P.A. Summers Architecture, LLC
2170 South State Road 39
Danville, Indiana 46122
Phone: 317-509-9236
P.A.Sarchitect@gmail.com



JOB NO.:	18169.1
DATE:	January 15, 2020
DRAWN BY:	ILP
CHECKED BY:	WS
REVISIONS:	



William J. Snodgrass

This drawing and its contents are the property of P.A. Summers Architecture, LLC and shall not be reproduced in whole or in part by any means, mechanical or electronic, without express written permission of P.A. Summers Architecture, LLC.
Copyright 2016 by P.A. Summers Architecture, LLC.

Renovations
To
MAJESTIC CARE CONNERSVILLE
1029 E. 5th Street
Connerville, Indiana 47331

Prepared For:

Majestic Care Medical & Health
8935 Technology Drive
Fishers, Indiana 46038

SHEET

E601
ELECTRICAL
ONE-LINE
DIAGRAM
(BASE BID)